

ALUXS

LED PROFILES



neodia

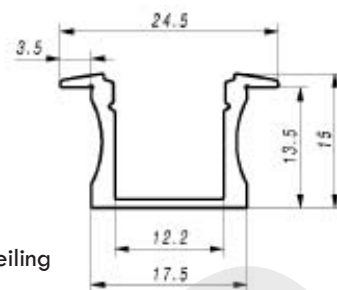
www.neodia.be - info@neodia.be

**PREMIUM
QUALITY
ALUMINIUM
LED
PROFILES**

INBOUW SLIM LINE 15mm

Introduction

It is recessed type of the aluminum LED profile to build into material as MDF or other. The profile can be also recessed into oor (with IP54 LED ribbon inside only), wall or ceiling and the wide edges of the profile will cover the edges of insertion row completely. Extruded polycarbonate, high quality diffuser now is placing/removing from the front on click. It is UV resistant, and damage resistant (walk over safe tested). Customer has a choice of three types of the diffusers that can be placed into that LED profile, frosted, 50% frosted and transparent.



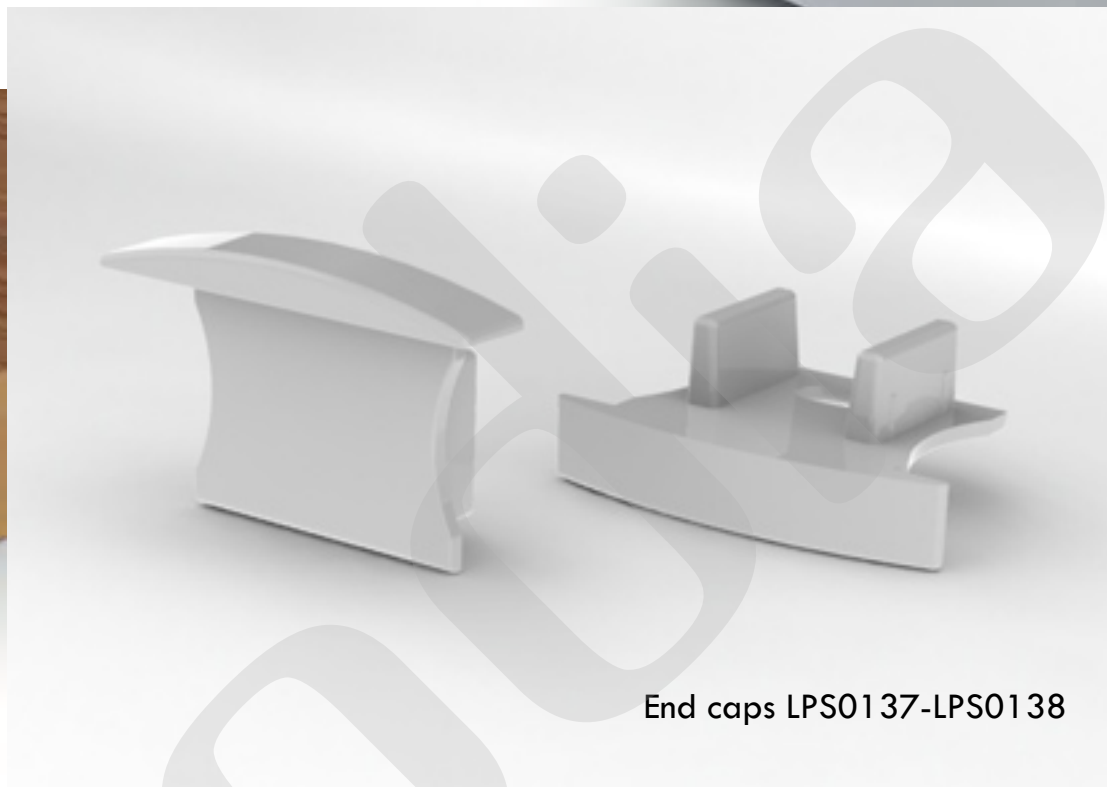
TOEPASSINGEN

- Onder keuken kasten - werkbladen
- Vloerverlichting (with IP65 led's)
- Leggers
- Gyproc plafonds, muur accent verlichting
- Meubelproductie
- Beursstanden
- Binnenverlichting

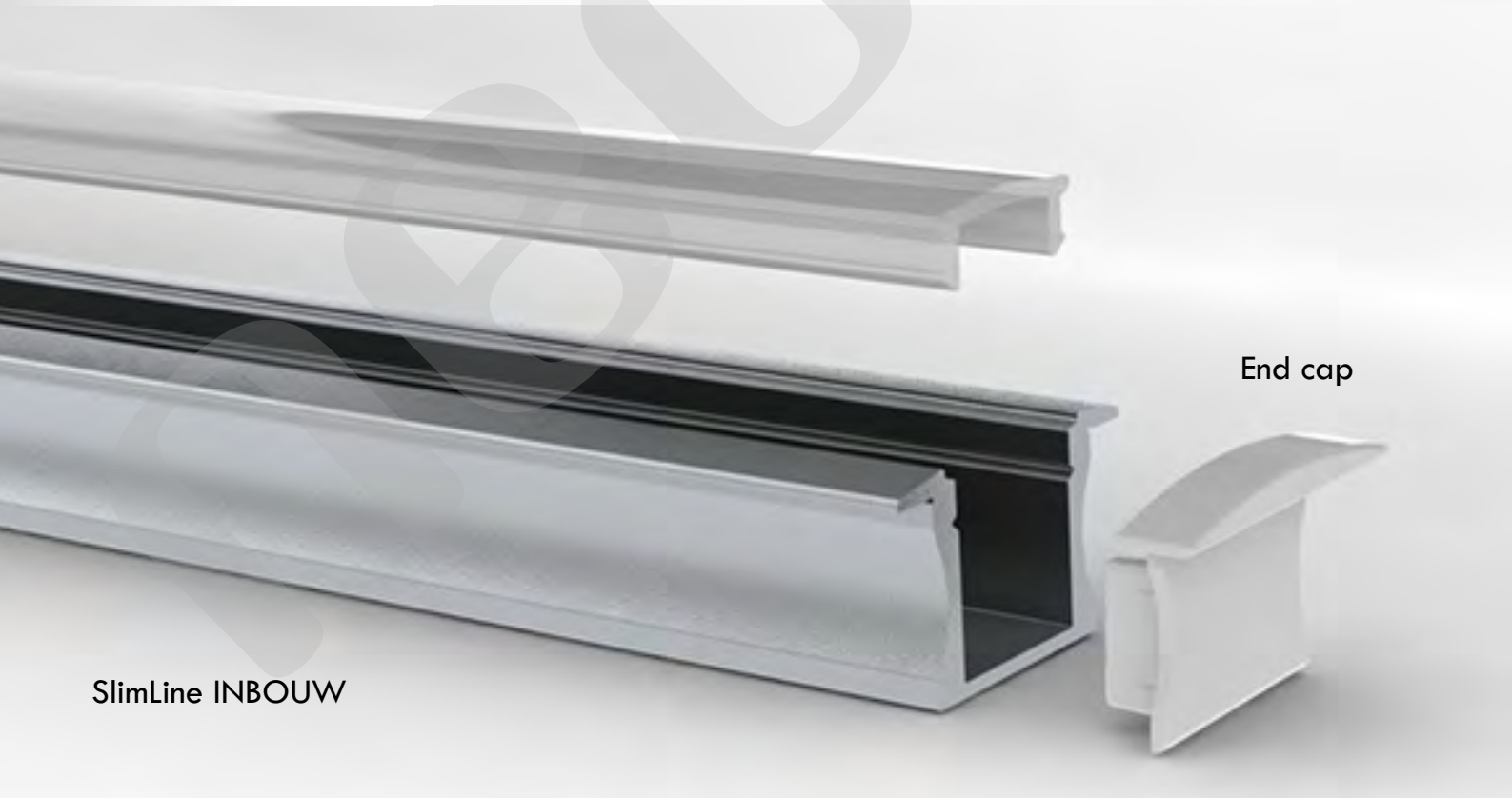
LPA0131-LPA0133



INBOUW SLIM LINE 15mm



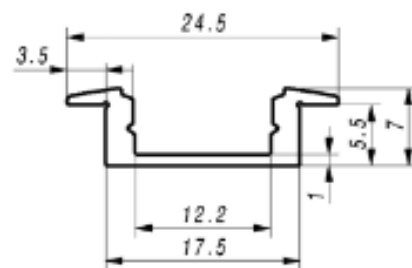
End caps LPS0137-LPS0138



SlimLine INBOUW

End cap

INBOUW SLIM LINE 7mm



LPA0111-LPA0113

FEATURES:

- Recessed type with clean design
- Cover up the edges of the mill
- Very low profile, only 7mm high
- Perfect for low power LED stripes
- Diffuser placed/removed from the top
- Designed for indoor use only
- Available with frosted or clear diffuser
- Made from aluminum / anodized
- Available in lengths of 1m or 2m

APPLICATIONS:

- Kitchen cabinets LED lighting
- Furniture production
- Interior accent lighting
- Shop shelf exposition LED lighting
- Exhibition stands

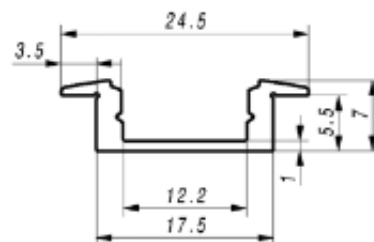
INBOUW SLIM LINE 7mm

FEATURES

OPBOUW type with clean design
 Cover up the edges of the mill
 Vely low profile, only 7mm high
 Perfect for low power LED stripes
 Diffuser placed/removed from the top
 Designed for indoor use only
 Available with frosted or clear diffuser
 Made from aluminum / anodized
 Available in lengths of 2m.

APPLICATIONS

Kitchen cabinets LED lighting
 Furniture production
 Interior accent lighting
 Shop shelf exposition LED lighting
 Exhibition stands



End caps LPS0117-LPS0118



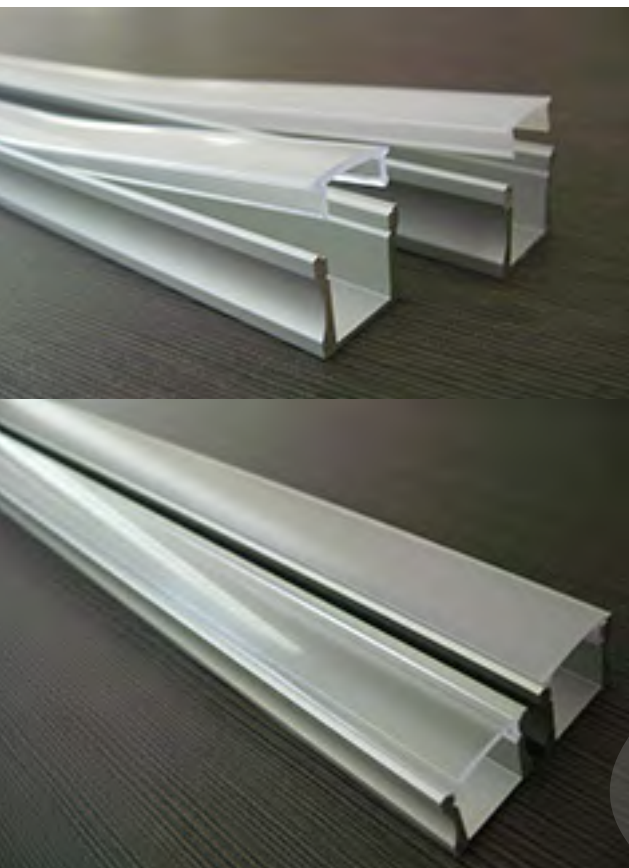
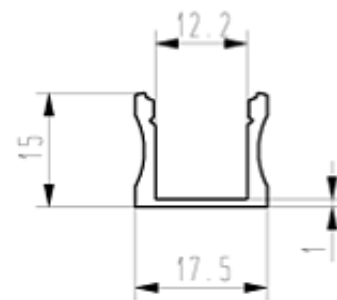
LPA0111



LPS0117

LPA0111-LPA0113

SLIM LINE 15mm



FEATURES

- High quality diffuser, placing/removing from front on click
- Led dots free prole (frosted)
- Walk on safe diffuser, UV resistant polycarbonate diffuser
- Available with 50% frosted, frosted and transparent diffuser
- LED dots free on frosted diffuser (high density LED's strip)
- Made from anodizing aluminum
- Suitable for low/high power led bars
- Available lengths – 1m, 2m
- Heat sink and physical protection to the LEDs
- For indoor use only

APPLICATIONS

- Furniture production (kitchen / office)
- Interior light design (stairs / storage / floor)
- Stores shelf LED lighting
- Independent LED lamp
- Exhibition boot LED lighting

LPA0121-LPA0123

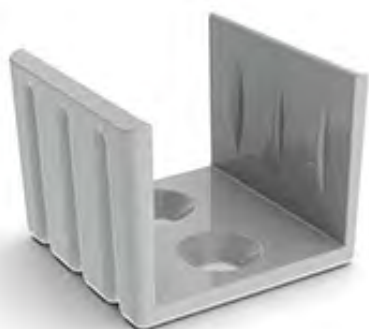
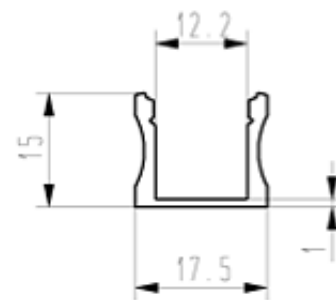
SLIM LINE 15mm

FEATURES

- Clean design
- Suitable for high power LED bars
- Diffuser placed/removed from the top
- Designed for indoor use only
- Available with frosted or clear diffuser
- Made from aluminum / anodized
- Available in lengths of 1m or 2m

APPLICATIONS:

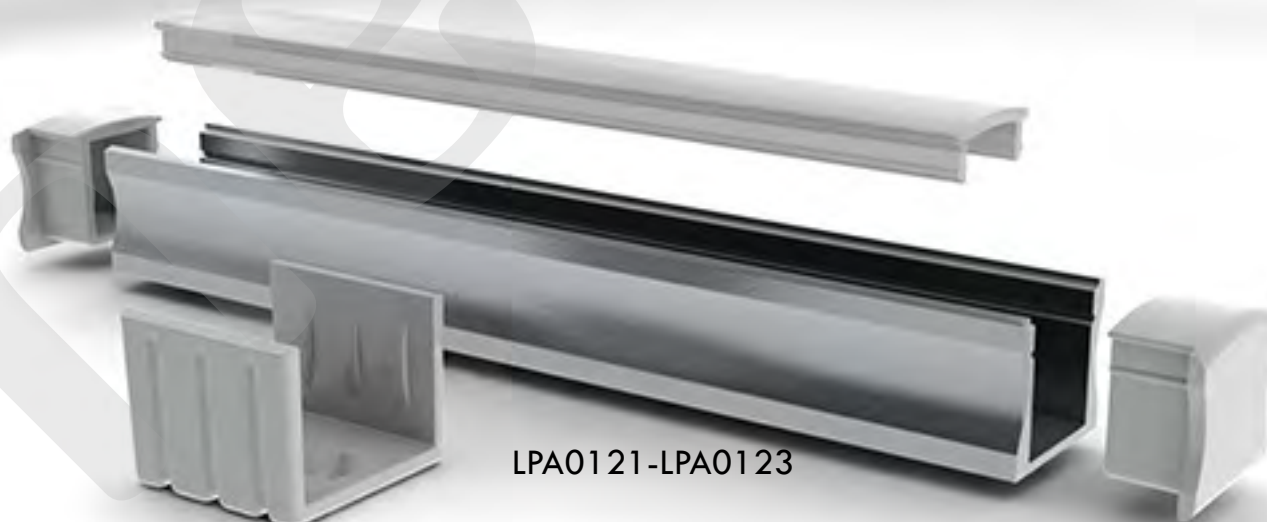
- Furniture production
- Interior accent lighting
- Shop shelf exposition
- Advertising stands
- Exhibition stands



LPS0129



End caps LPS0127-LPS0128



LPA0121-LPA0123

LPS0129

LPS0127

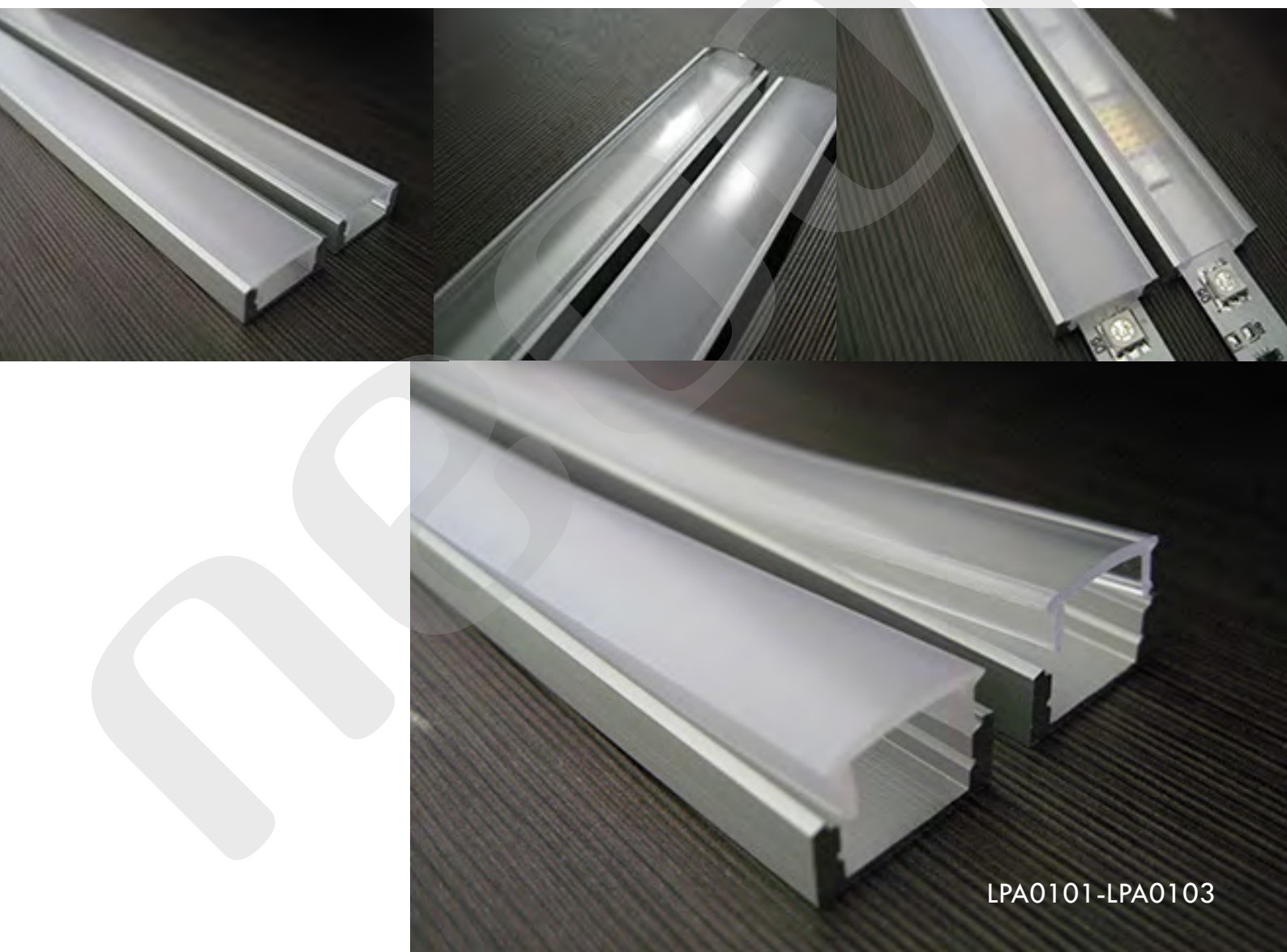
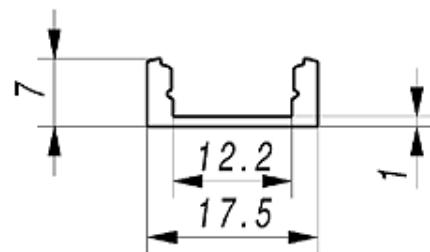
SLIM LINE 7mm

FEATURES

- High quality diffuser, placing/removing from front on click
- Walk on safe diffuser, UV resistant polycarbonate diffuser
- Available with opal, 50% opal and transparent diffuser
- Available lengths – 1m, 2m, 3,5m (large quantity orders)
- Made from anodizing aluminum
- Suitable mostly for exible led stripes
- For indoor use only
- Low profile only 7mm high

Applications:

- Furniture production (kitchen / office)
- Interior light design (stairs / storage / floor)
- Stores shelf LED lighting
- Independent LED lamp
- Exhibition boot LED lighting



LPA0101-LPA0103

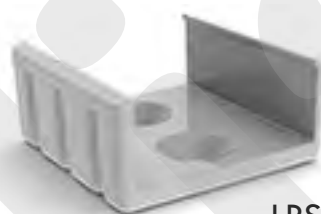
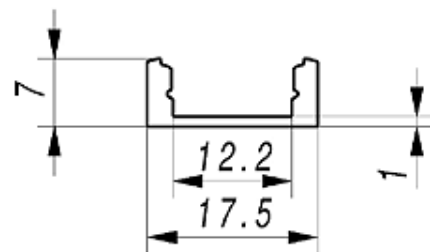
SLIM LINE 7mm

FEATURES

- High quality diuser, placing/removing from front on click
- Walk on safe diuser, UV resistant polycarbonate diffuser
- Available with opal, 50% opal and transparent diffuser
- Available lengths – 1m, 2m, 3,5m (large quantity orders)
- Made from anodizing aluminum
- Suitable mostly for exible led stripes
- For indoor use only
- Low profile only 7mm high

APPLICATIONS

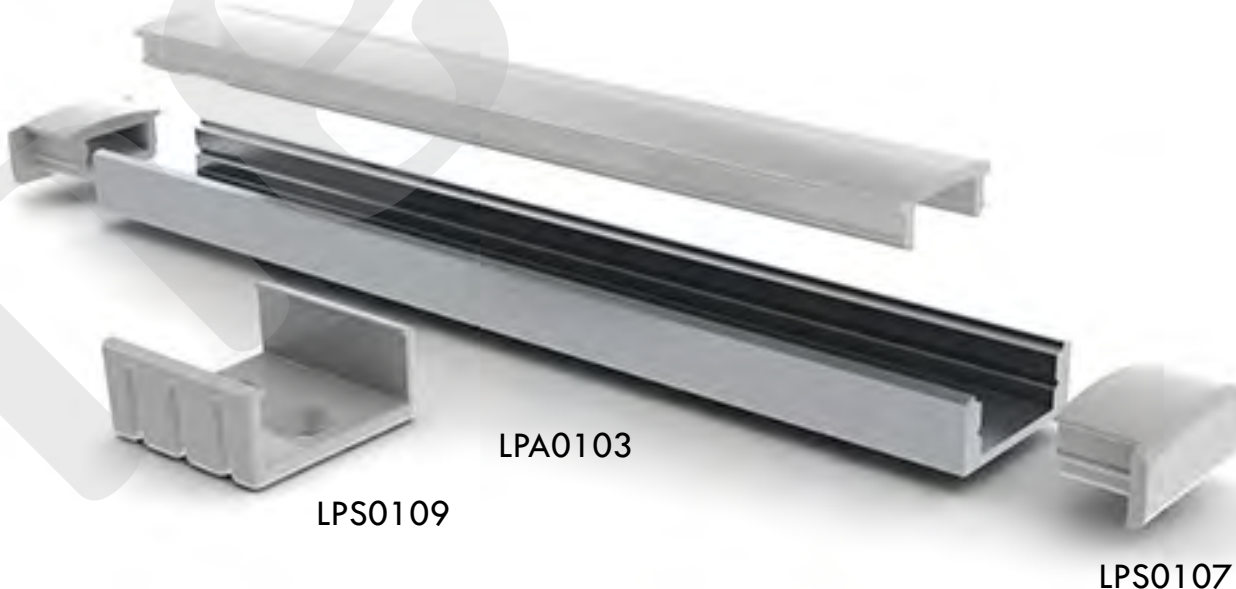
- Furniture production (kitchen / office)
- Interior light design (stairs / storage / floor)
- Stores shelf LED lighting
- Independent LED lamp
- Exhibition boot LED lighting



LPS0109



End caps LPS0107-LPS0108



LPA0103

LPS0109

LPS0107

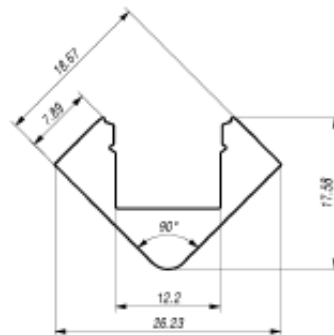
ALU-45

Profile with 45° light angle

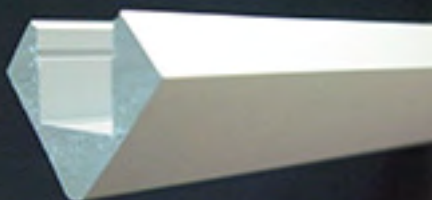
Profile made from anodized aluminum with 45° degree light emitting angle. ALU-45 has been designed to fit in any corner LED lighting application.

The light emitted by the leds is directed by the profile in 45° degree angle and do not blind the person who is standing in front of it. Large amount of aluminum provides excellent cooling condition (heat sink) for the high density LED bars or high power LED bars. The profile is available in anodized aluminum and White RAL9010. Profile comes with polycarbonate UV resistant diffuser that now is placed into the profile from front on click.

The customer has choice between transparent, 50% frosted or a frosted diffuser.

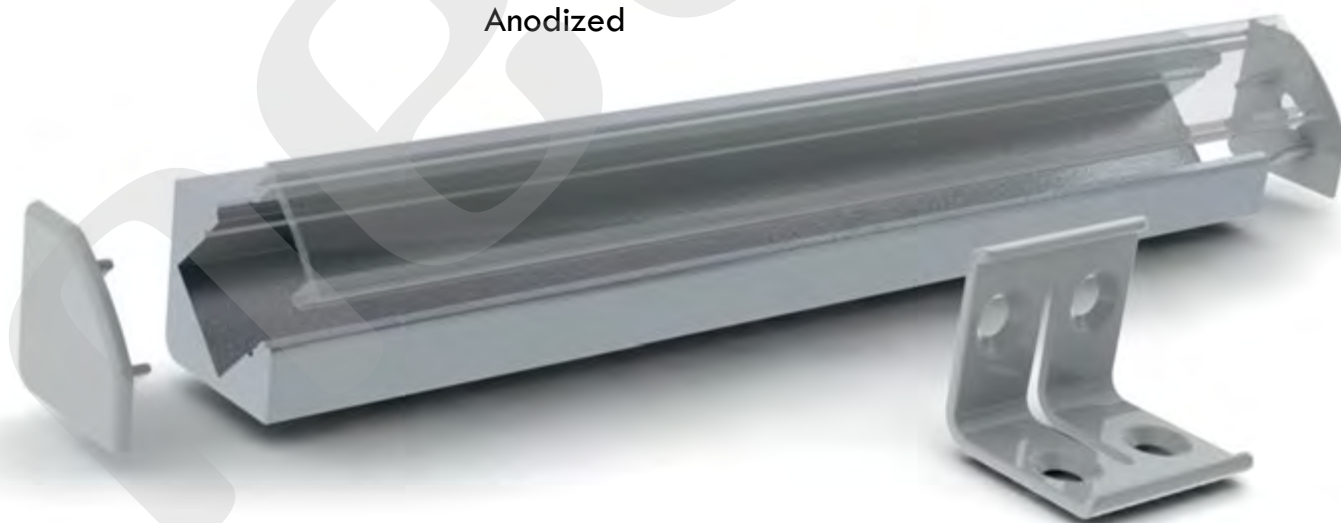


RAL 9010



LPA0711-LPA0713

Anodized



LPA0701-LPA0703

ALU-45

Profile with 45° light angle



LPA0701-LPA0703

LPS0708

End caps with cable hole



LPS0707

End caps without cable hole



LPS0709

FEATURES

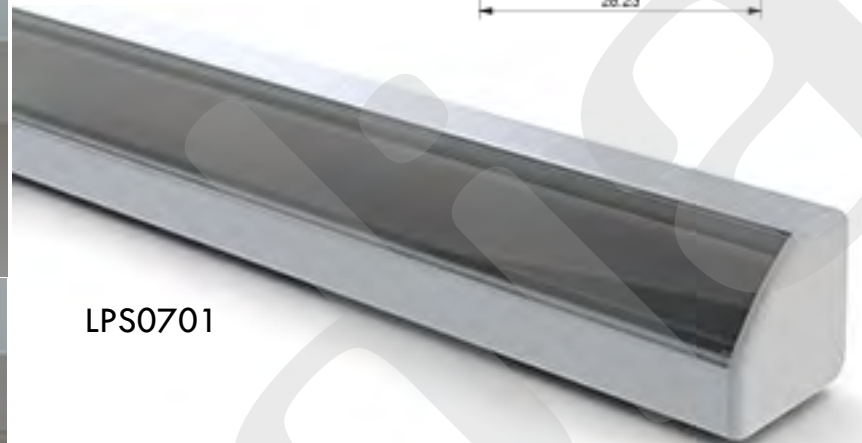
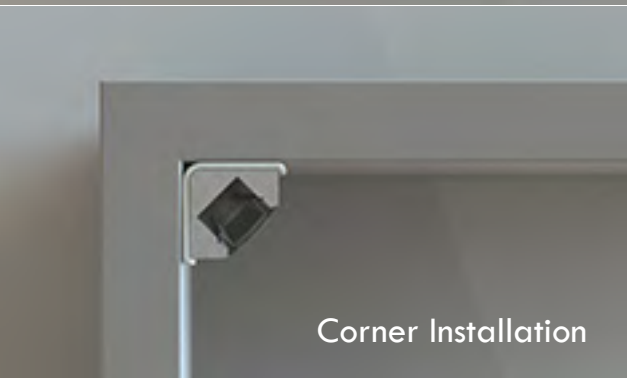
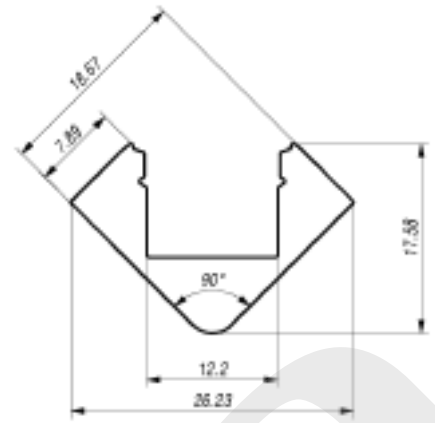
- High quality diffuser now placing from the front on click
- Polycarbonate UV resistant, damage resistant (walk over safe)
- Diffuser available in transparent, 50% opal and opal
- Base of the profile is made in anodized aluminum
- Profile available in RAL9010 and standard anode color
- Profile is available in lengths 1m/2m or 3,5m (large quantity order)
- ALU-CORNER is suitable for low power and high power leds
- Simplicity design with high quality finish

APPLICATIONS

- Under kitchen cabinets LED lighting
- Stores shelves LED lighting
- Furniture production, inside cabinets LED lighting
- Storage shelves LED lighting
- Exhibition boot LED lighting
- Interior LED lighting

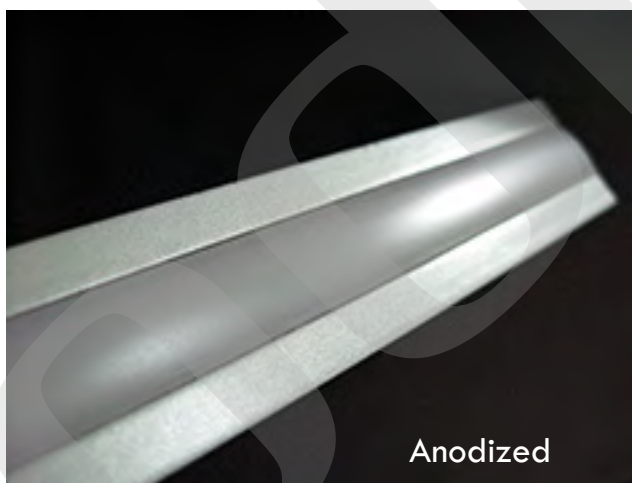
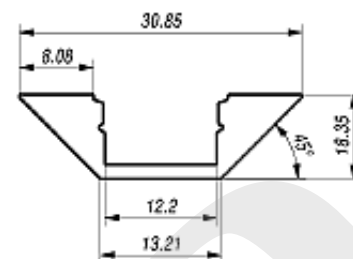


ALU-45 INSTALLATION OPTIONS

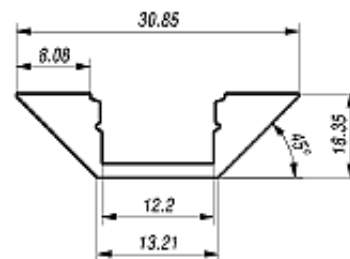


ALU CORNER

Profile is made from anodizing aluminum with 45° LED light emitting angle. It is perfect solution for under kitchen cabinets, store shelves LED lighting. The light emitted by the leds is directed by the profile in 45° degree angle and does not blind the person who is standing in front of it. The profile is available in anodized version of aluminum and White RAL9010. The profile comes with polycarbonate UV resistant diffuser, which is placed/removed, into the profile from front on click. The customer can choose between a transparent, 50% frosted or a frosted diffuser. Profile provides mechanical and thermal protection (heat sink) to the leds and is suitable for high power LED bars.



ALU CORNER



FEATURES

- High quality diffuser now placed from the front on click
- Polycarbonate UV resistant, damage resistant (walk over safe)
- Diffuser available in transparent, 50% opal and opal
- Base of the profile is made in anodized aluminum
- Profile is available in RAL9010 and standard anodized color
- Profile is available in lengths 1m/2m or 3,5m (large quantity order)
- ALU-CORNER is suitable for low power and high power leds
- Simplicity in design with high quality finish

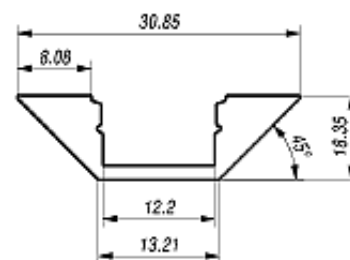
APPLICATIONS

- Under kitchen cabinets LED lighting
- Stores shelves LED lighting
- Furniture production, inside cabinets LED lighting
- Storage shelves LED lighting
- Exhibition boot LED lighting
- Interior LED lighting



LPA0731-LPA0733 White

ALU CORNER ACCESSOIRES

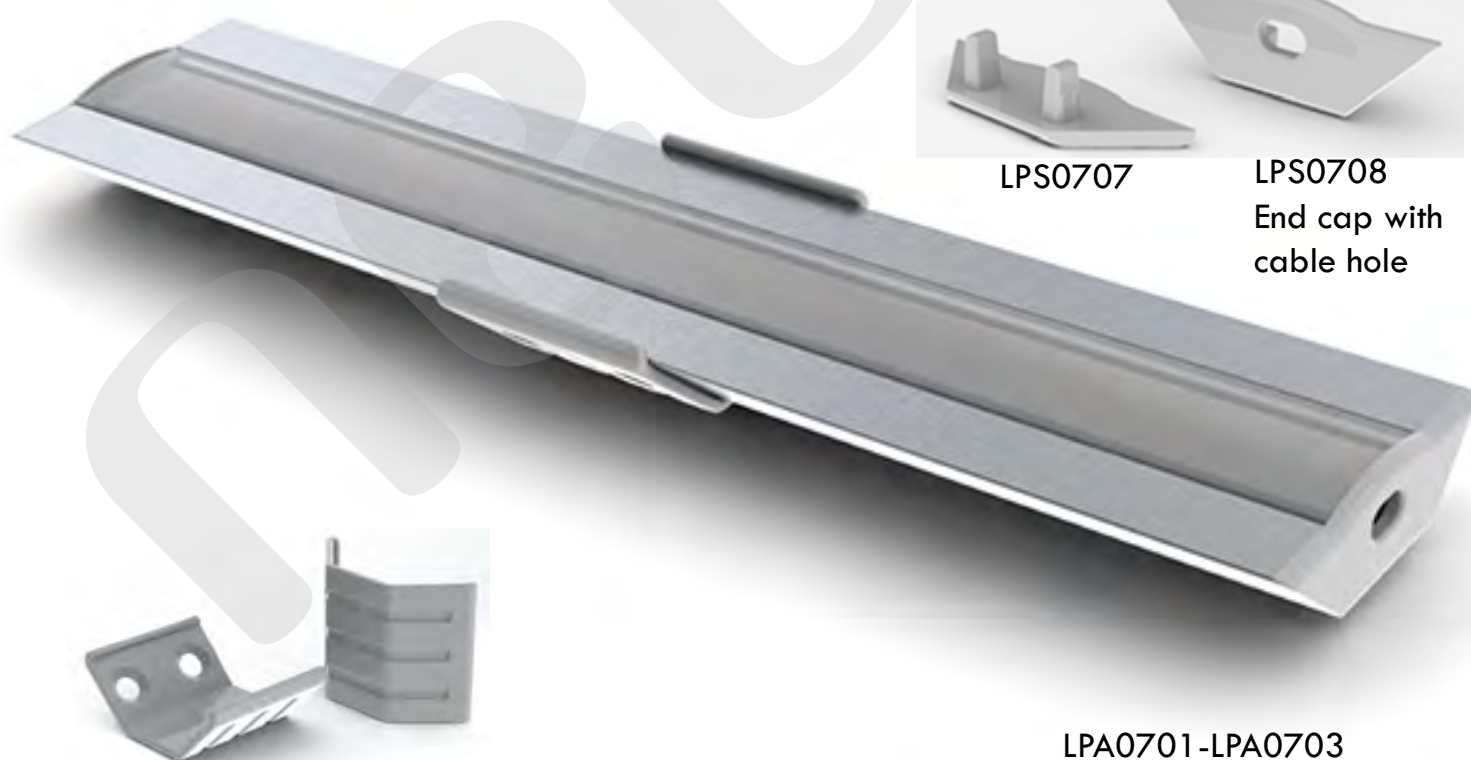


LPS0709



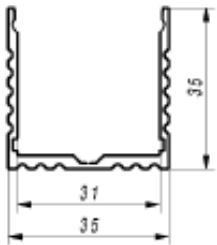
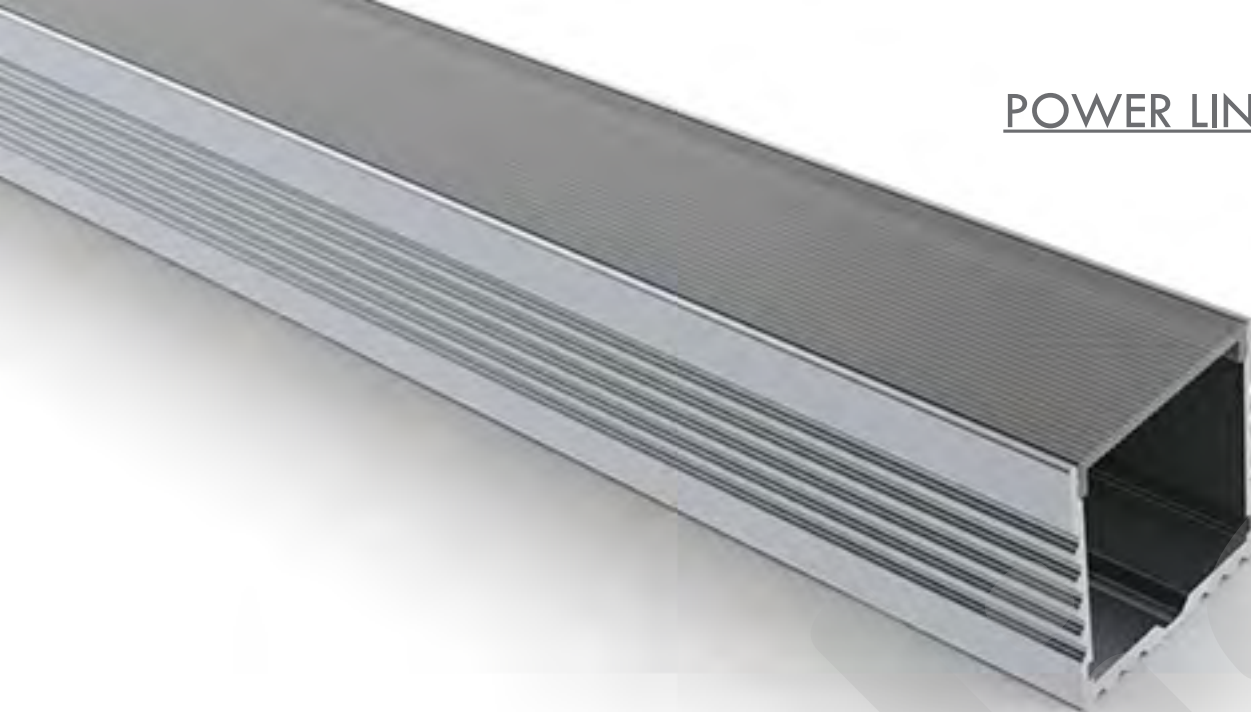
LPS0707

LPS0708
End cap with
cable hole



LPA0701-LPA0703

POWER LINE 35mm



LP0601-LP0604



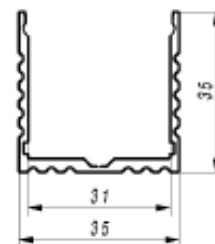
Power Line 35mm

This profile is meant to be used as the LED lighting fixture for main lighting at the offices, libraries show rooms or above the kitchen table. It is made from anodized aluminum and is suitable for up to 32mm wide high power LED bars. The profile can be suspended from the ceiling on the stainless steel wires or can be mounted with screws directly to the surface.

The profile has a polycarbonate UV resistant frosted diffuser or a transparent diffuser, that can be placed and removed from the front on click.

There are two types of finished end cups for two different installation options. Profile is available in length of 1m or 2m.

POWER LINE 35mm



End caps type
LPS0605



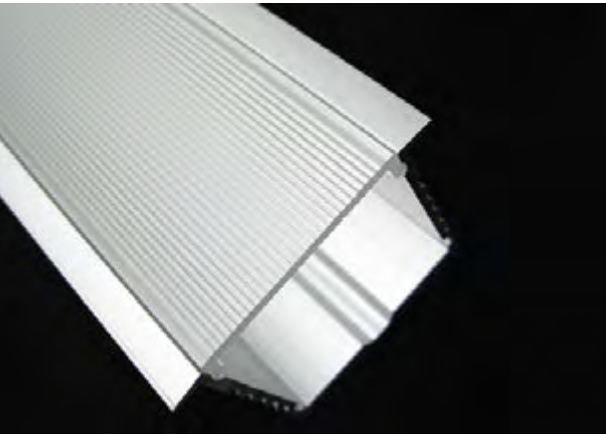
End caps type
LPS0606



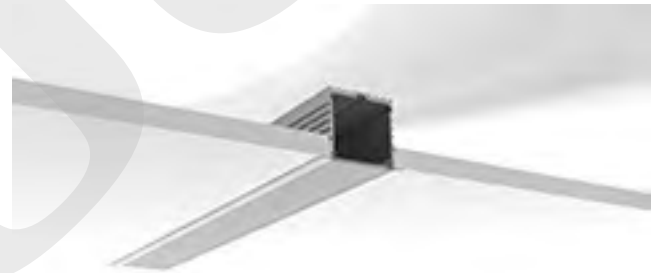
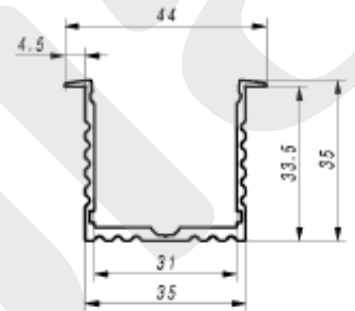
LPA0601-LPA0606



INBOUW POWER LINE 35mm



LPA0621-LPA0624



OPBOUW Power Line 35mm

This profile is dedicated to build into the gypsum ceiling as the LED lighting fixture for main lighting at offices, show rooms, restaurants and shops. It is made from anodized aluminum and is suitable for up to 32mm wide high power LED bars.

Profile comes with polycarbonate UV resistant frosted or transparent diffuser placed and removed from the front on click. The light diffusion with the frosted diffuser is complete. RPL35 is giving soft light on the whole surface. Profile is specially designed for high power LED lighting solutions. It is available in lengths of 1m or 2m.

INBOUW POWER LINE 35mm



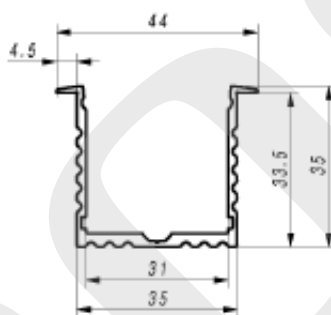
LPA0621-0624

FEATURES

- High quality polycarbonate diffuser
- No LED dots shows on the diffuser surface
- Right high, soft and smooth light diffusion
- Diffuser is placed/removed from the top on click
- High quality anodized aluminum base
- Heavy duty "heat sink" for high power LEDs
- Compatible with our 30mm wide high power LED bars
- Matching finish end cups for this profile are available
- Gypsum ceiling installation
- Available in length of 2m/1m with clear or frosted diffuser



LPS0625

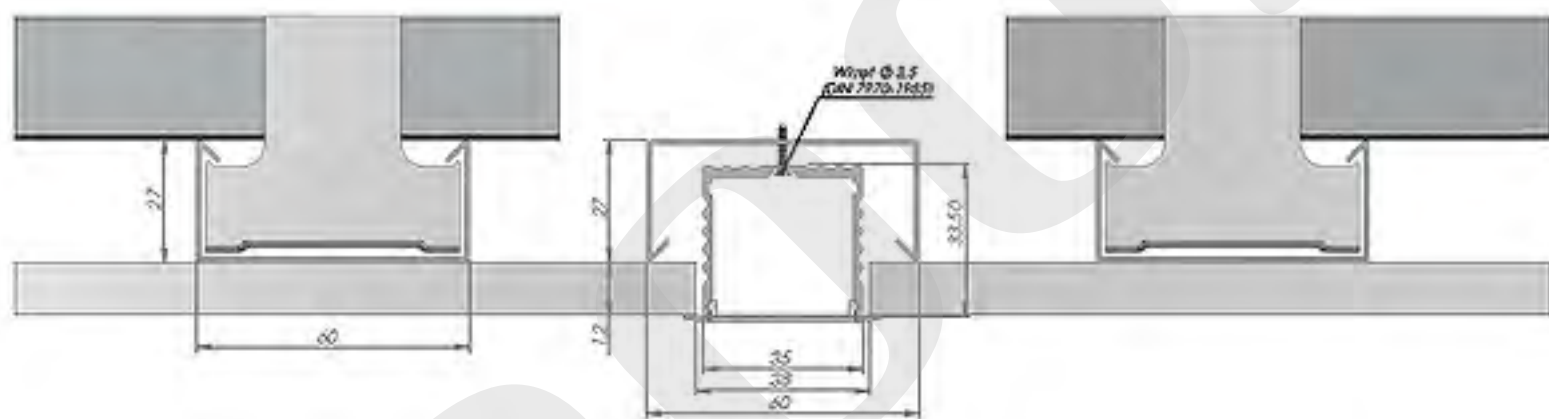


APPLICATION

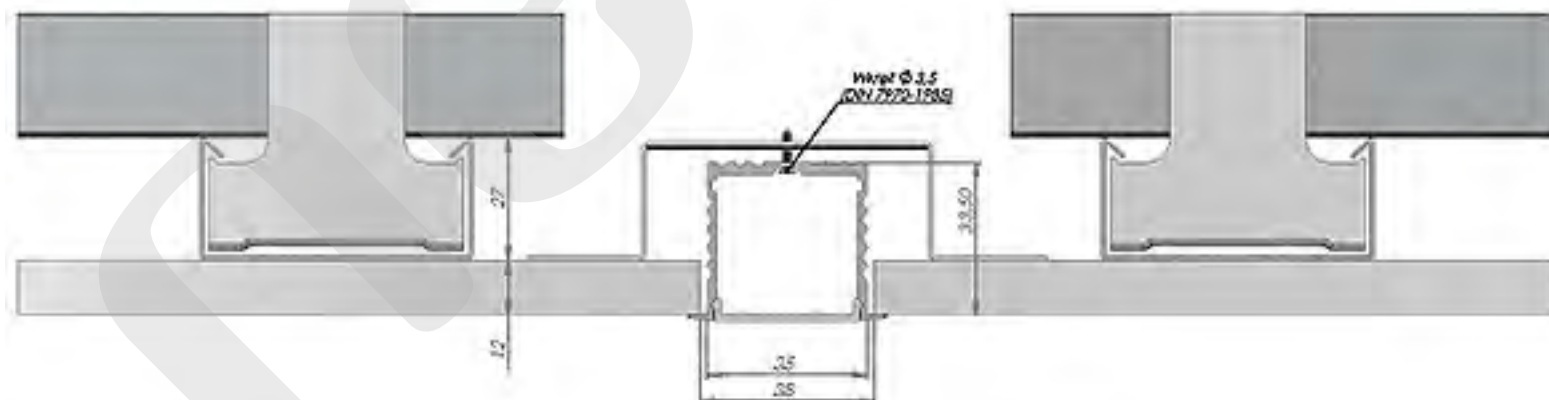
- Show rooms ceiling LED lighting
- Restaurants ceiling LED lighting
- Shopping malls LED lighting



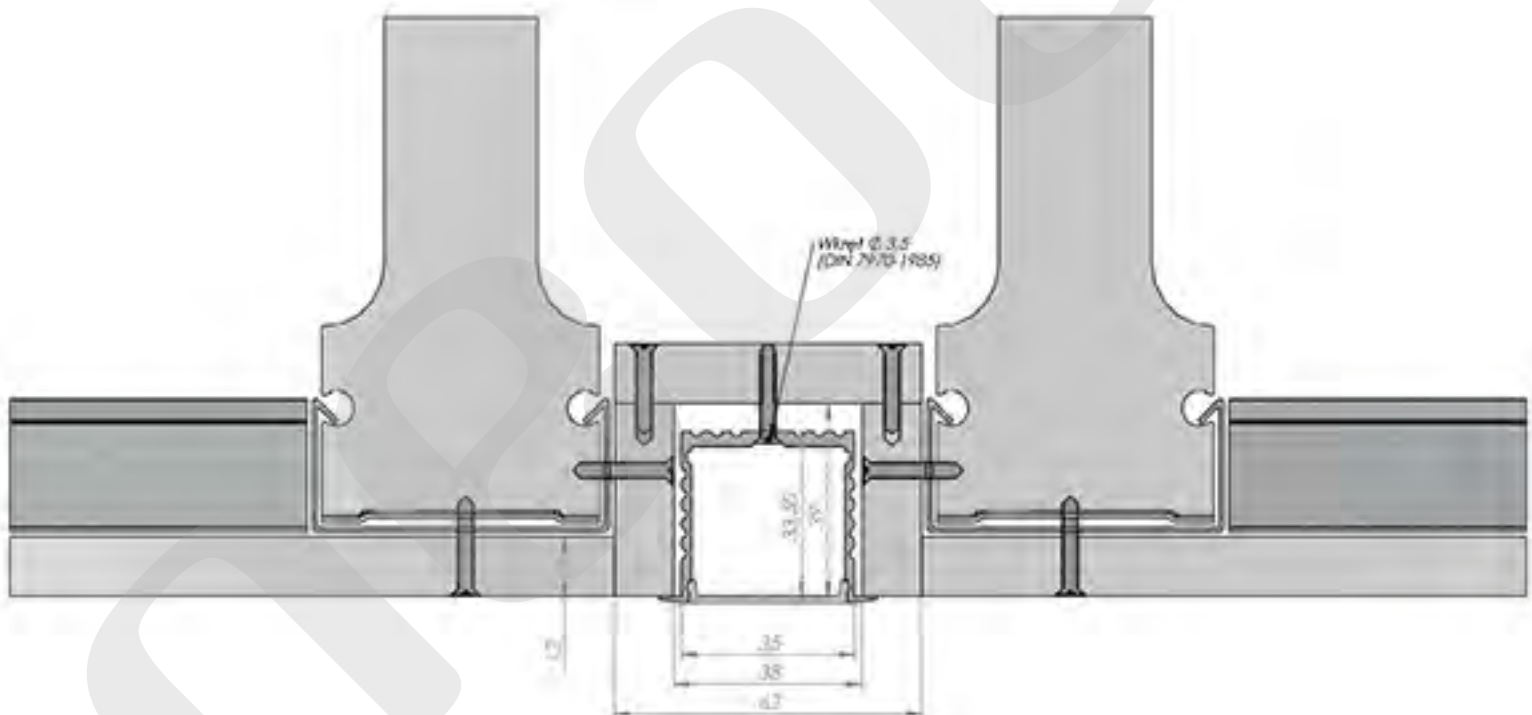
OPTIE 1. ZONDER BEPERKINGEN - BRAND RESTRICTIES



OPTIE 2. ZONDER BEPERKINGEN - BRAND RESTRICTIES



OPTIE 3. MET BEPERKINGEN - BRAND RESTRICTIES



ALU ROUND

FEATURES

- High quality round shape polycarbonate diffuser
- Diffuser is placed/removed from the top on click
- High quality anodized aluminum base
- Heavy duty "heat sink" for high power LEDs
- Compatible with up to 12mm wide high power LED bars
- Available finish end caps and mounting system with angle regu
- Two different installation options (wall or suspended)
- Available in length of 2m/1m with clear or frosted diffuser

APPLICATION

- Hotels headboard bed reading lamp with angle regulation
- Show rooms track LED lighting
- Reception desk main LED lighting
- Restaurants above table main LED lighting
- Shopping boutiques exposition LED lighting

LPA0801-LPA0804

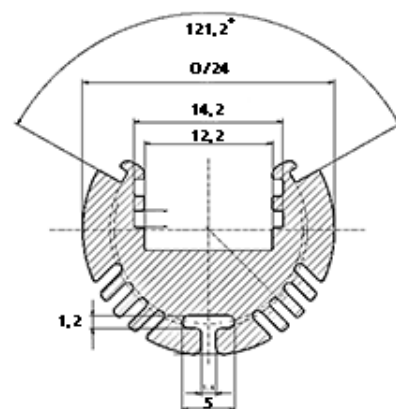
ALU-ROUND LED Profile

This is a round shape LED profile with round diffuser. It has been designed for high power led lighting. Massive aluminum weight provides excellent mechanical and thermal protection to the LEDs. The profile is made from anodized aluminum and it comes with a round UV resistant polycarbonate clear or frosted diffuser.

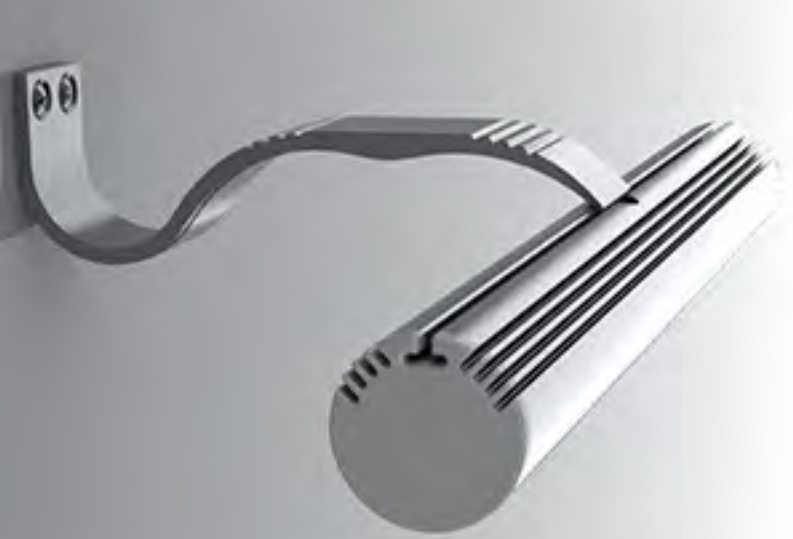
The installation of the diffuser is from the front on click. Installation and removing is easy and simple. It comes in 1m or 2m sections and is suitable for high power led lighting.

The ALU-ROUND can be installed in the wardrobe or closet as a clothes rod led lighting, in the jewelry cases, refrigerated cabinets at the grocery store and other places.

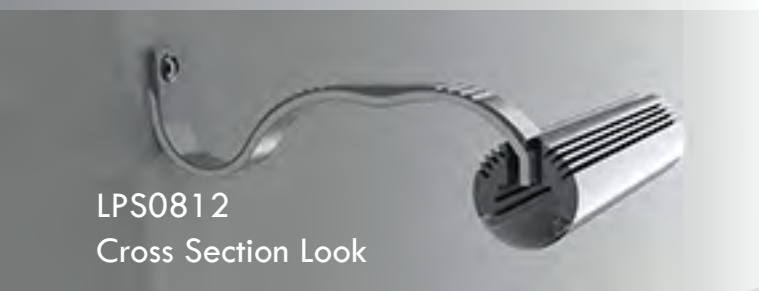
LPA0801-LPA0804



ALU ROUND ACCESSORIES



Wall Arm 102mm

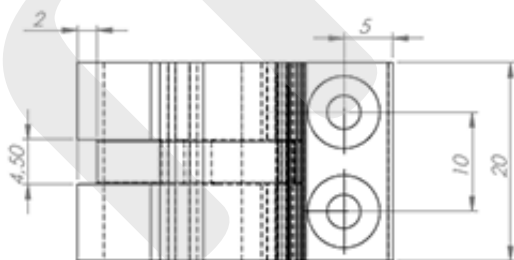


LPS0812
Cross Section Look

This arm is specially designed for the Alu-Round Led profile. The special material will draw behind the profile is allowing us to slide in the arm and hold firmly in place the LED fixture.

The power feeding cable is mounted towards the profile thru the wall arm, which is the best possible way.

The profile now can be installed at any place on the wall lighting up the wall or some objects standing next to it. The design of the wall arm is matching with the design of the Alu-Round profile.

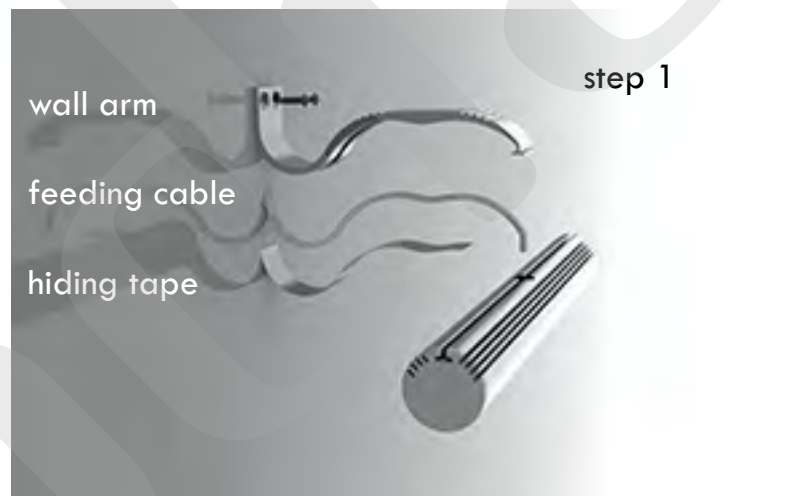


wall arm

feeding cable

hiding tape

step 1



step 2

wall arm without hiding tape



step 3

final look,
wall arm with hidden feeding cable

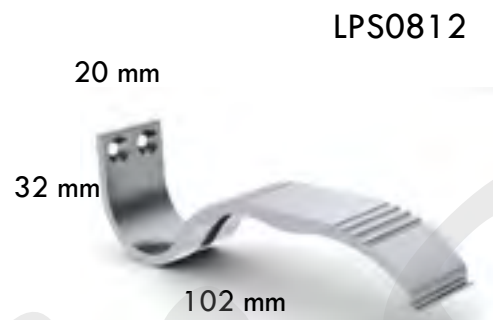


ALU-ROUND ACCESSORIES

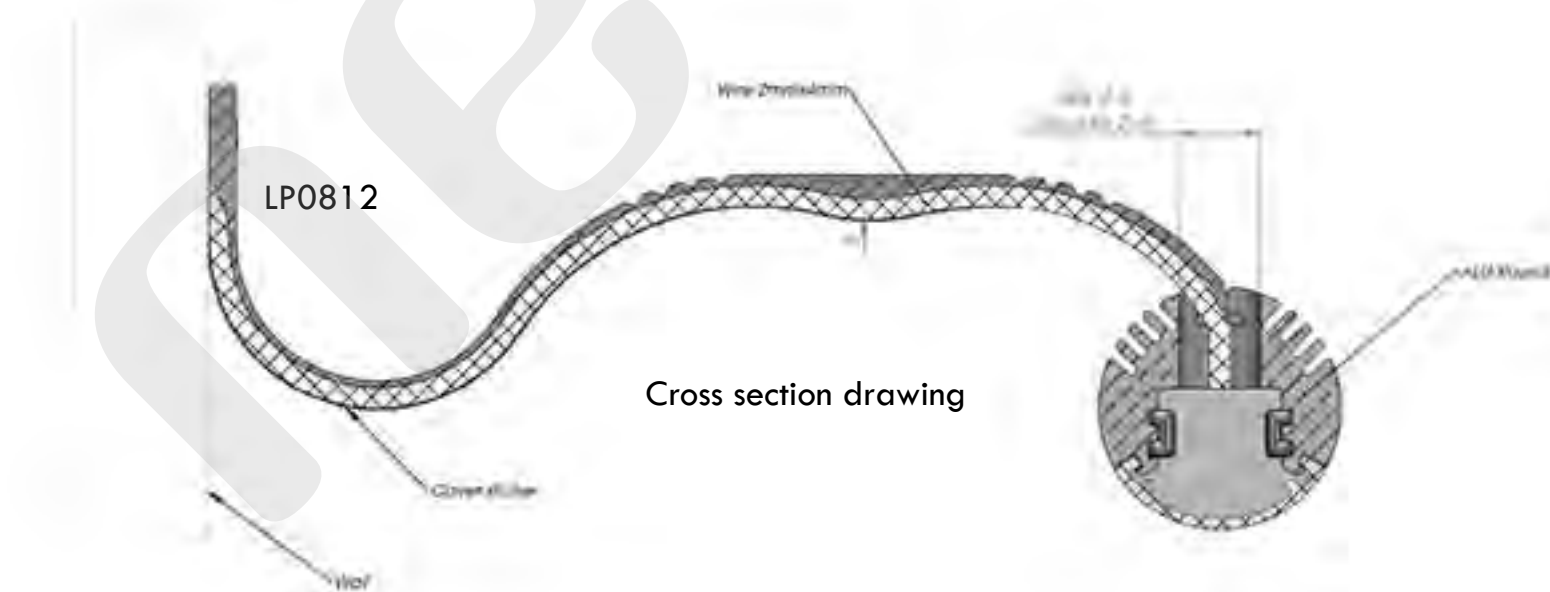
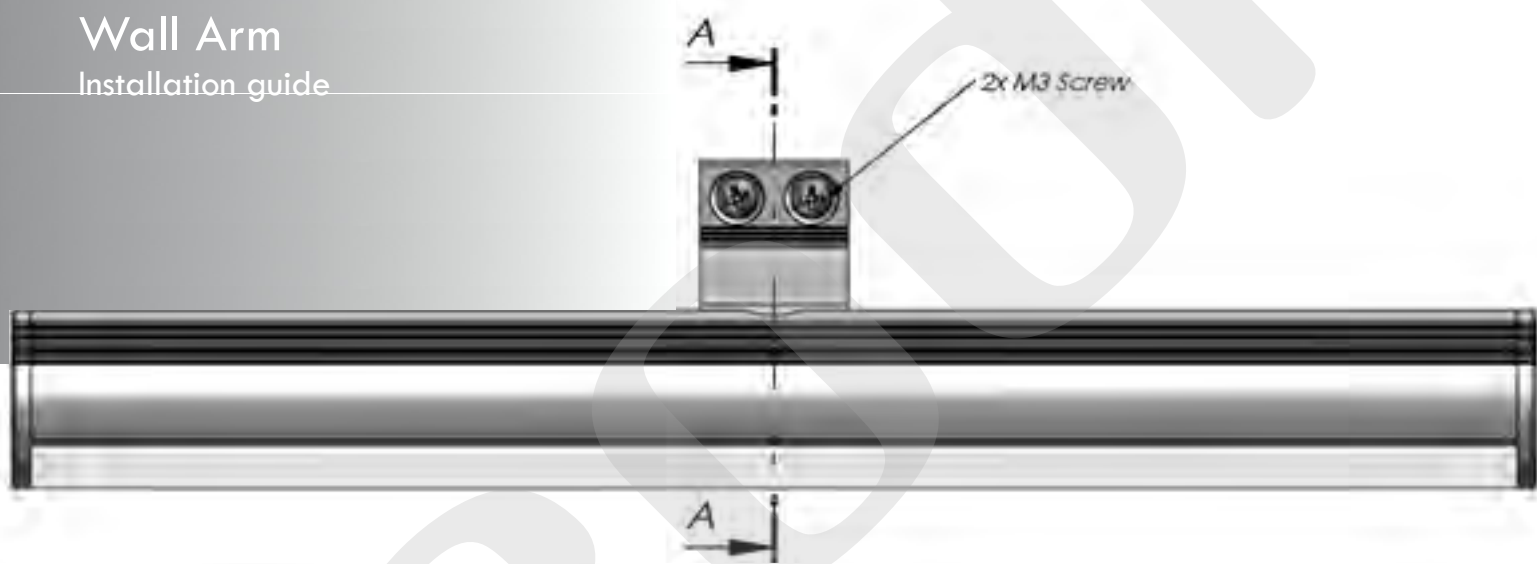


LP0801

Wall Arm Installation guide



LPS0812



ALS0816

Art Lighting Arm

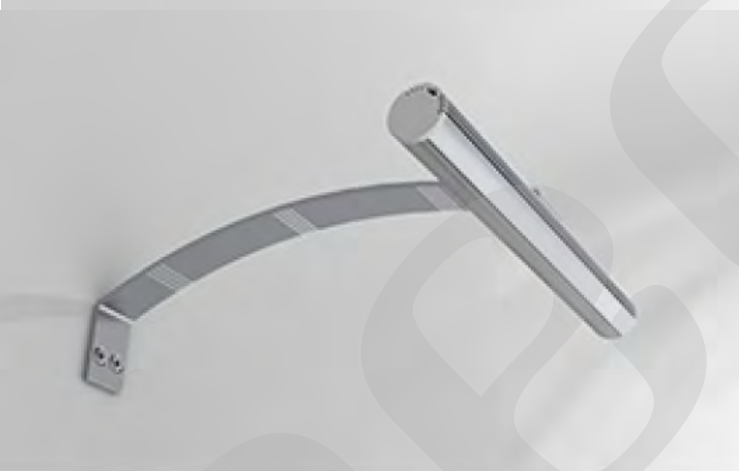
Art Lighting Arm

The main purpose for this arm is lighting from down or from above the objects such as art work, gallery, jewelry etc.

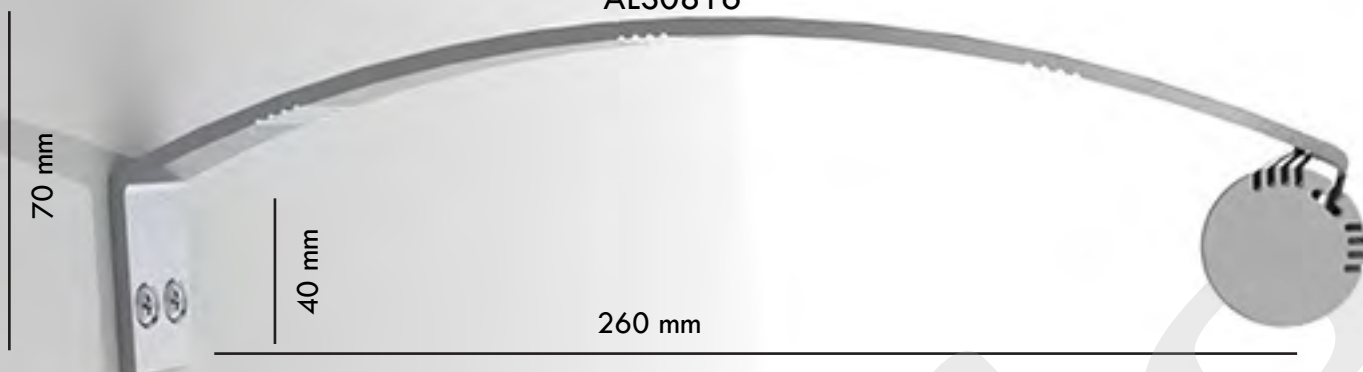
The light emitted by leds is directed in 45 degree angle.

The arm is matching perfectly with the Alu-Round led prole.

The feeding cable is hidden in the arm and can be covered by the sticky aluminum imitating tape



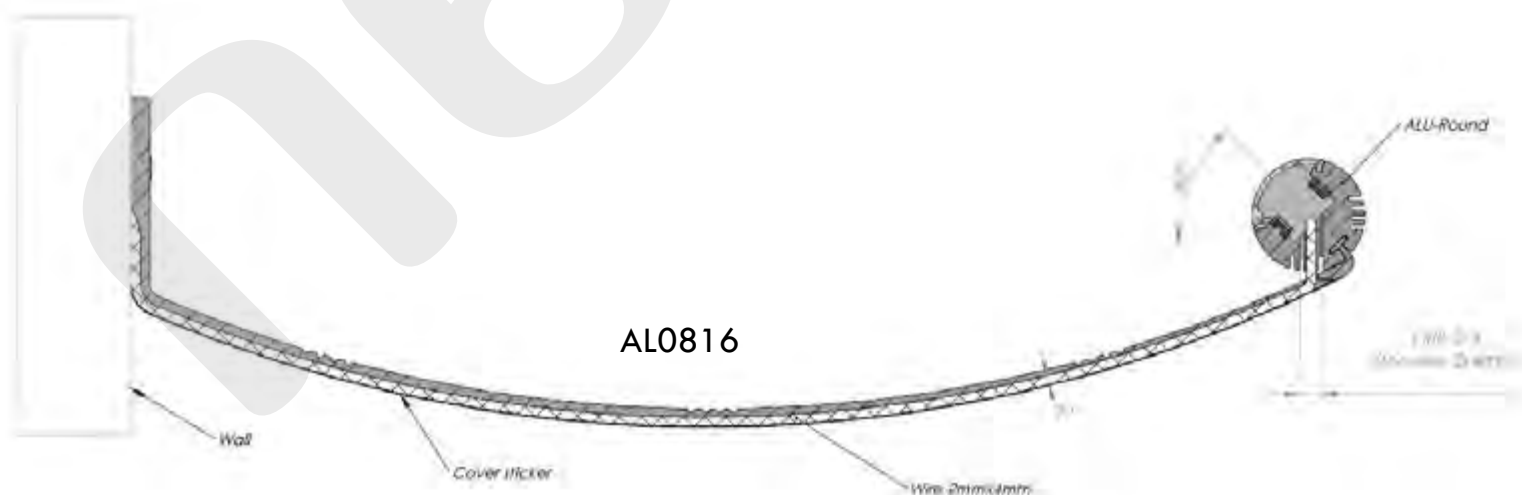
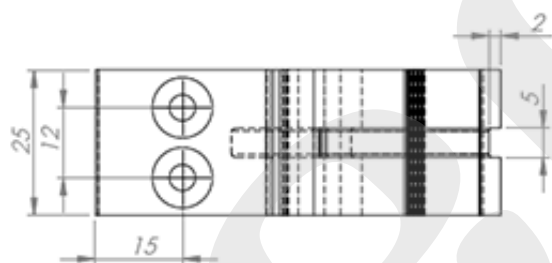
ALS0816



Art Lighting Arm

Installation Guide

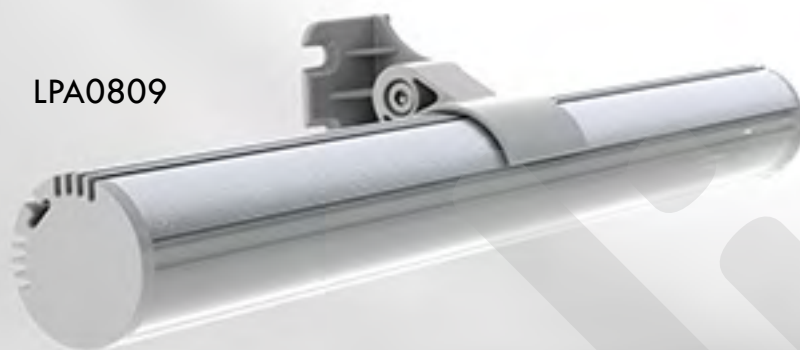
Groef voor voedings kabel



ALU-ROUND ACCESSORIES

Fluent lighting angle regulation from 0-180 degree
with the mounting clip LPA0809

LPA0809



LPS0807



LPS0808



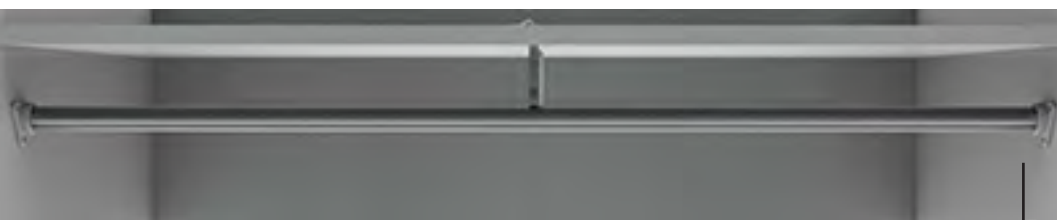
LPS0809



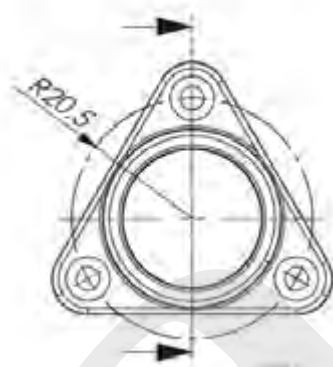
180 degree position

ALU-ROUND ACCESSORIES

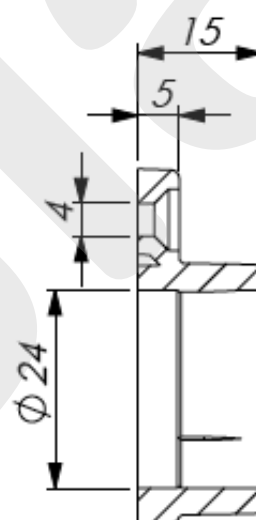
Closet bracket for Alu-Round LED Profiles



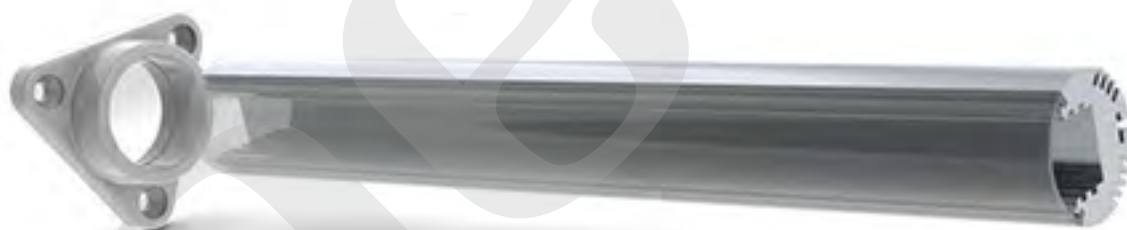
Wall to wall closet led rod (Alu-Round) installation



LPS0810 R2
Closet bracket



Closet brackets are made from special material which do not brake during the screwing or heavy load



LPA0801-LPA0804



LPS0810

ALU-ROUND ACCESSORIES

Intermediate support arm for Alu-Round led profile for closet



Stem mount of 1m led prole (Alu-Round) at the closet



Alu-Round
intermediate support
LPS0811 R3

LPA0801-LPA0804



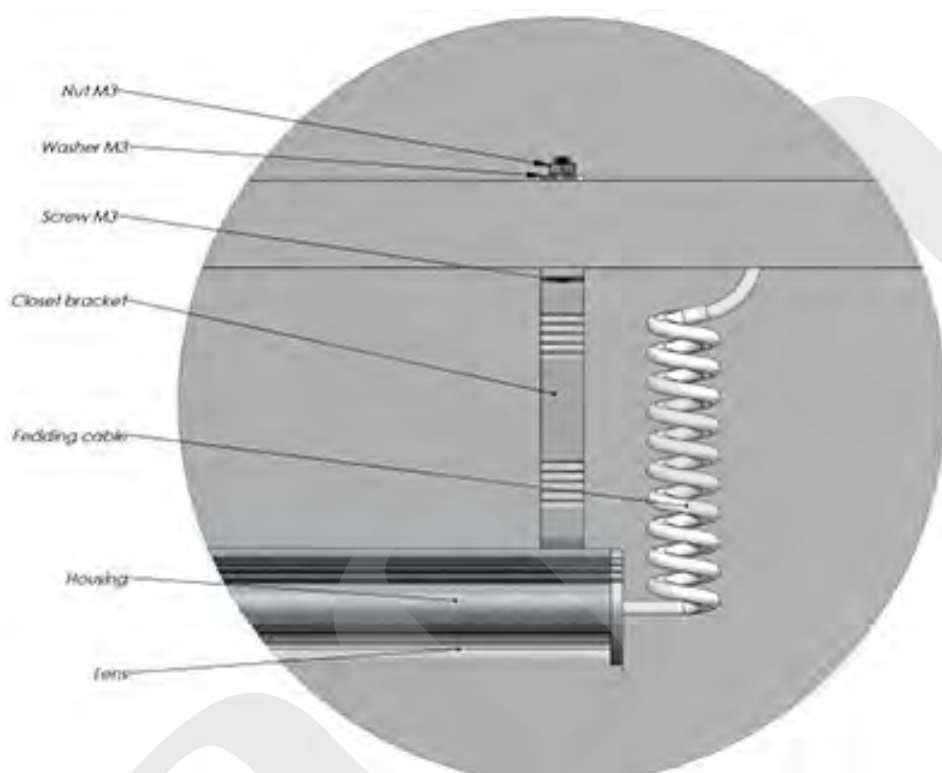
LPS0810

LPS0810

ALU-ROUND ACCESSORIES

Intermediate support arm for Alu-Round led prole for closet mount

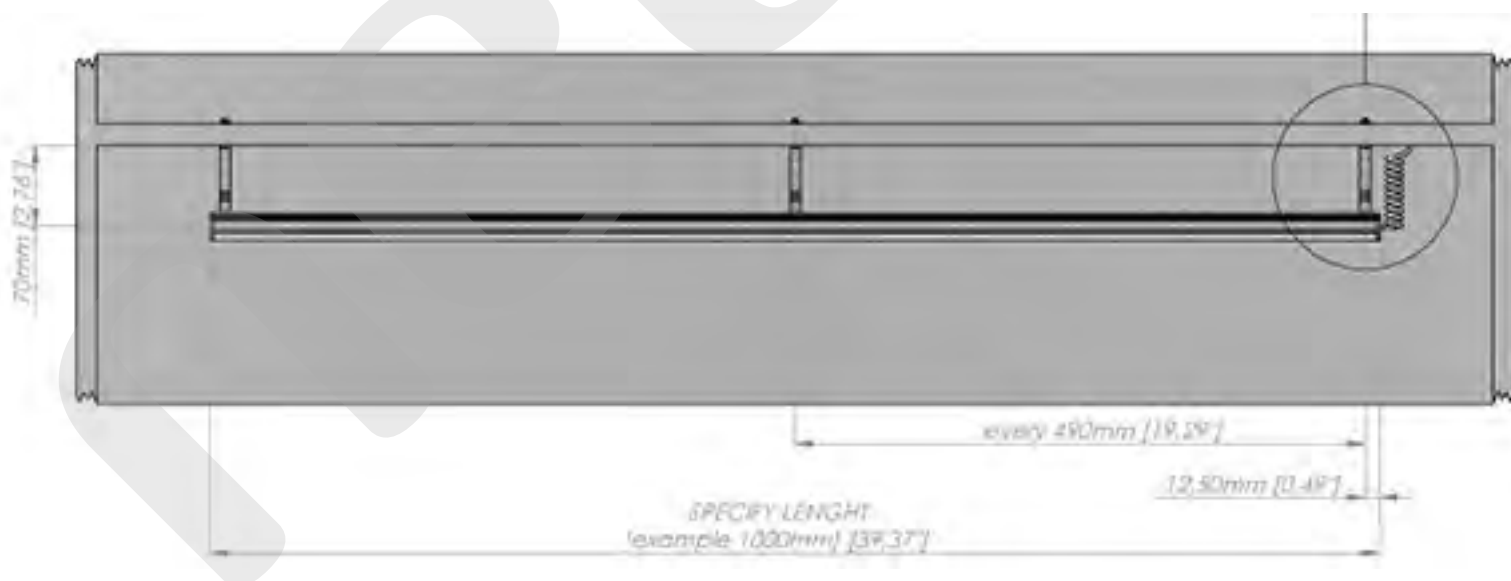
Stem Mount



Intermediate supports

Length : 100cm - 3pcs

200cm - 5pcs

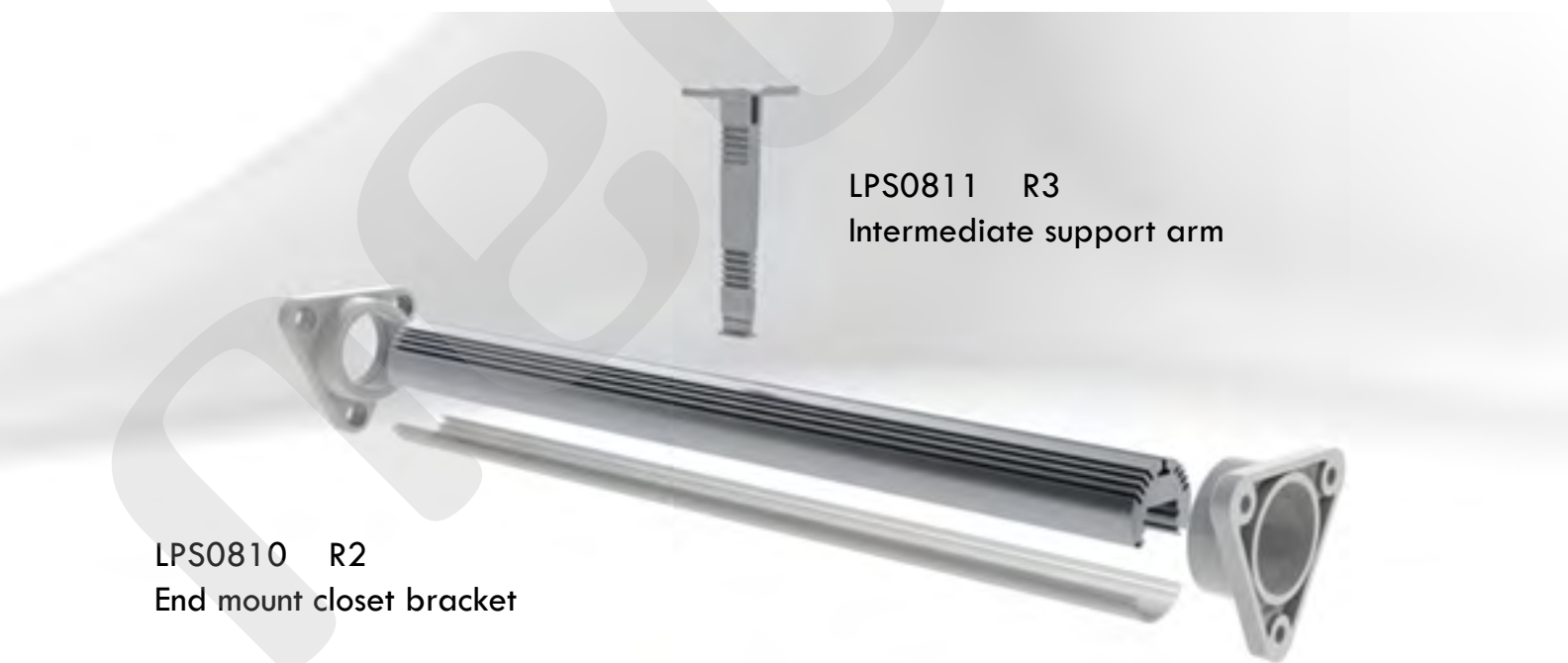
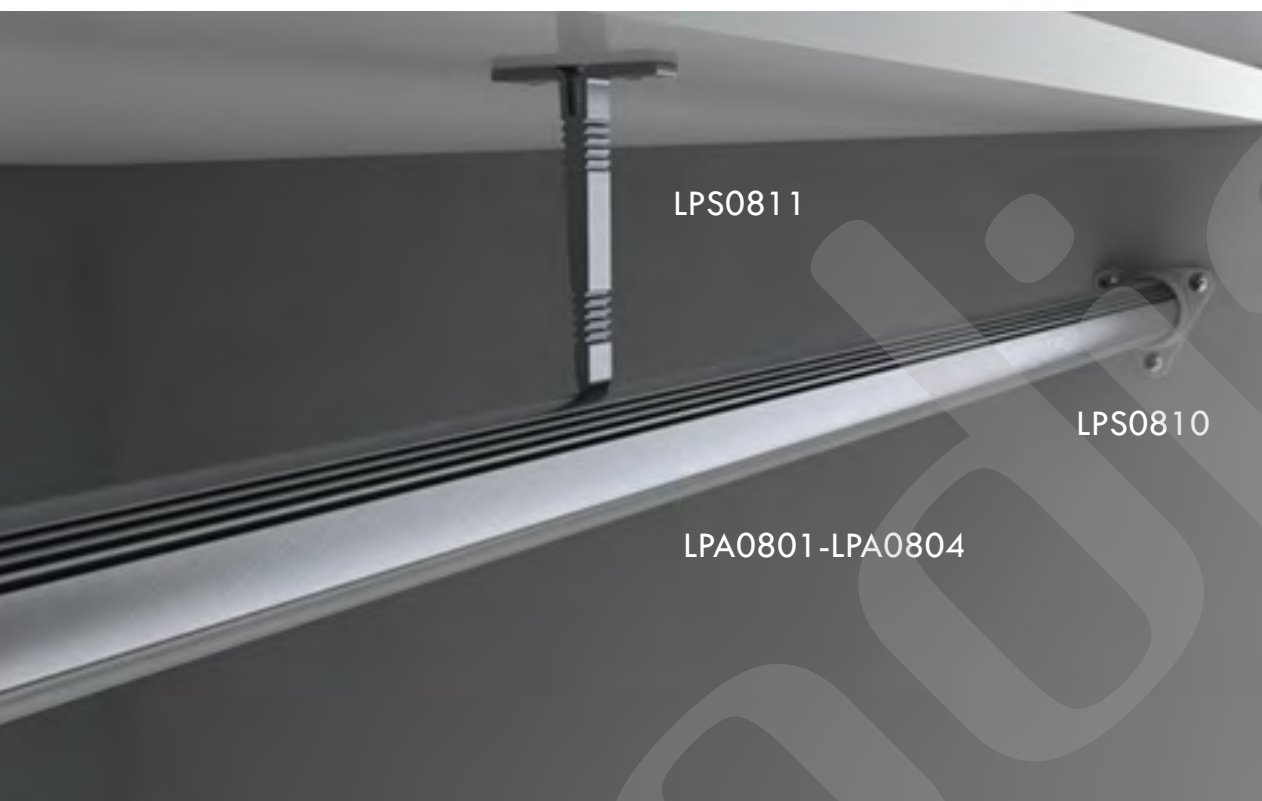


Maximum capability of weight handling per one arm is 25kg

ALU-ROUND ACCESSORIES

Intermediate support arm for Alu-Round led prole for closet mount

End Mount



ALU-ROUND ACCESSORIES

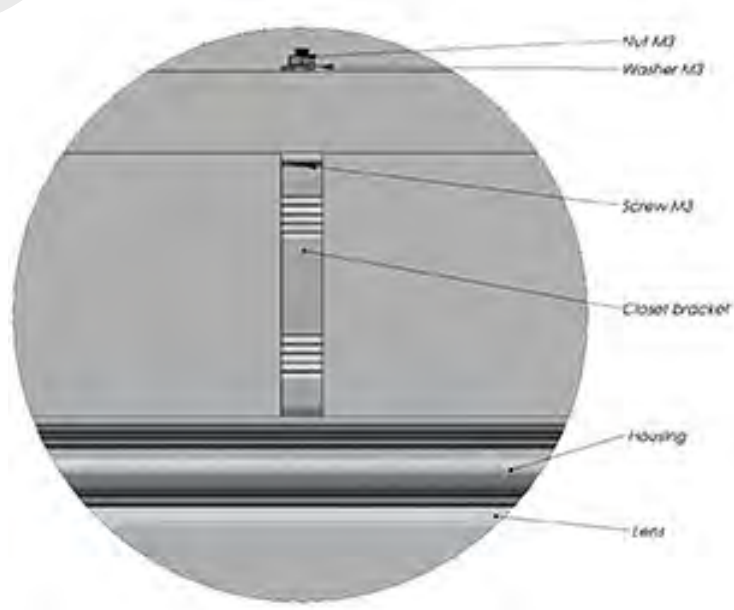
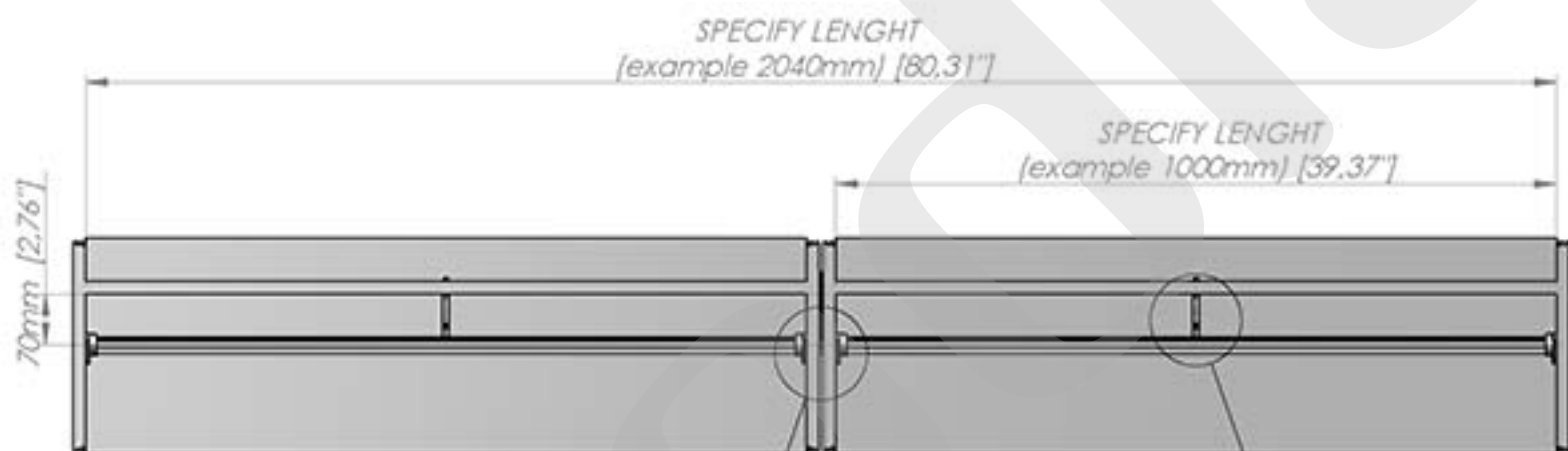
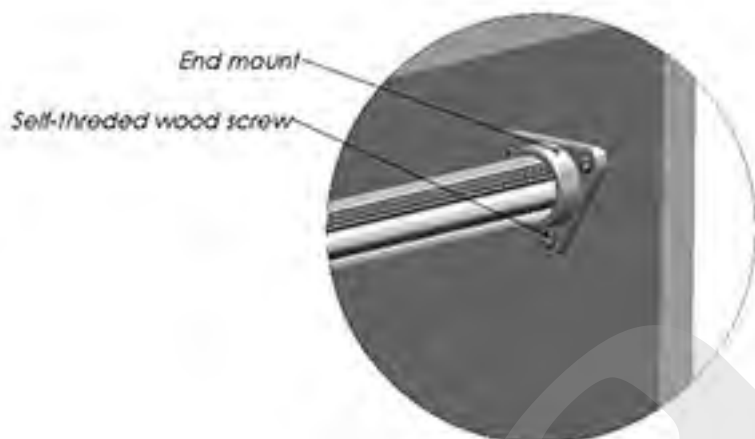
Intermediate support arm for Alu-Round
led prole for closet mount

End Mount

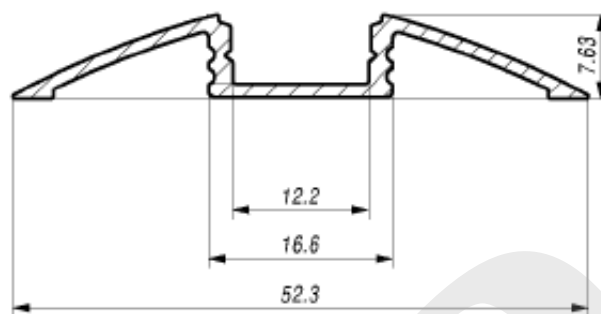
Intermediate supports

Length : 100cm - 3pcs

200cm - 5pcs



ALU-FLAT



FEATURES

- High quality diffuser now placed from the front on click
- Polycarbonate UV resistant, damage resistant (walk over safe)
- Diffuser available in transparent, 50% opal and opal
- Base of the profile is made in anodized aluminum
- Profile is available in RAL9010 and standard anodized color
- Profile is available in lengths 1m/2m or 3,5m (large quantity order)
- ALU-FLAT is suitable for low power and high power LEDs
- Simplicity in design with high quality finish
- Profile and diffuser is "walk over safe"
- Protection grade IP20



APPLICATIONS

- Under kitchen cabinets LED lighting
- Stores shelves LED lighting
- Floor LED lighting
- Storage shelves LED lighting
- Exhibition boot LED lighting
- Interior LED lighting

LPA0501-LPA0503 alu anodized
LPA0511-LPA0513 white RAL9010

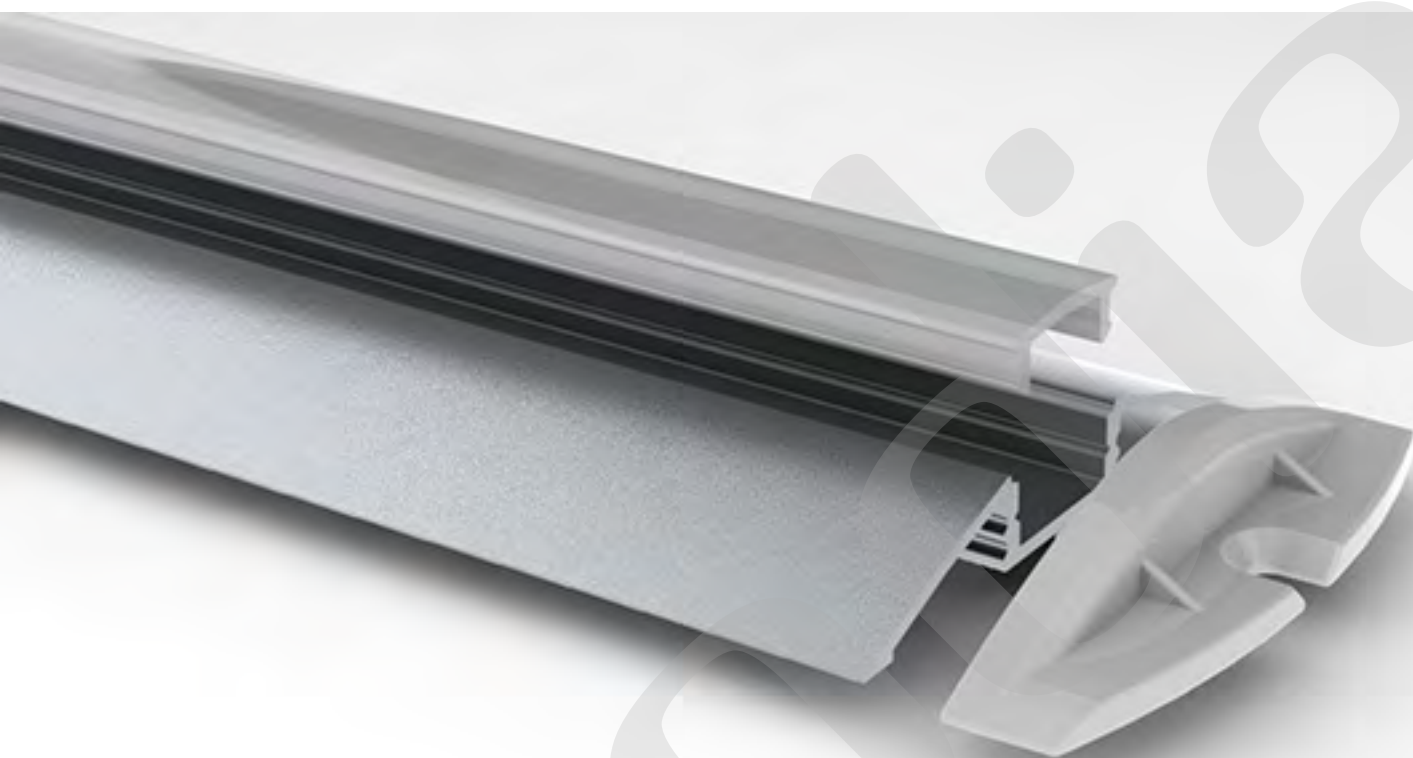
ALU-FLAT LED Profile

Aluminum LED profile only 7,6mm. The aluminum profile walls thickness and the damage resistant diffuser allow you to walk over this profile. It has been positively tested and is "walk over" safe. The profile is available in anodized version of aluminum and RAL9010. Profile comes with polycarbonate UV resistant, damage resistant diffuser, which now is placed, into the profile from front for click. The customer has choice of use transparent, 50% frosted and frosted diffuser. Profile provides mechanical and thermal protection (heat sink) to the LEDs and is suitable for high power LED lighting. The profile has many different applications it can work as under store shelves independent LED lamp or can be installed on the floor to cover the connection and provide additional protection for the computer cables.

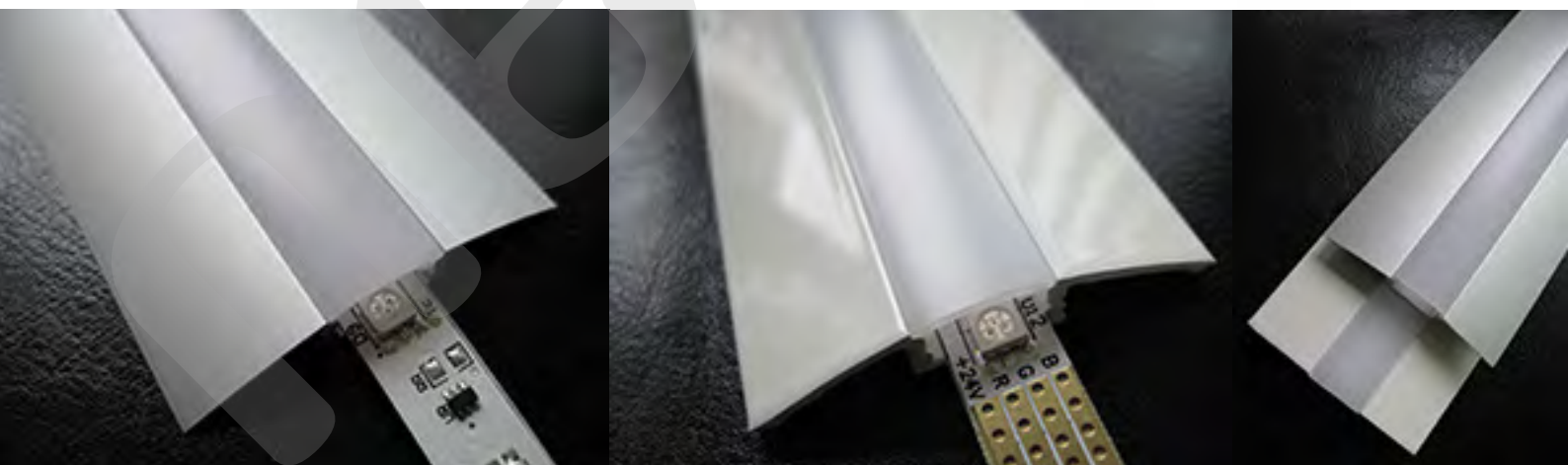
ALU-FLAT ACCESSORIES

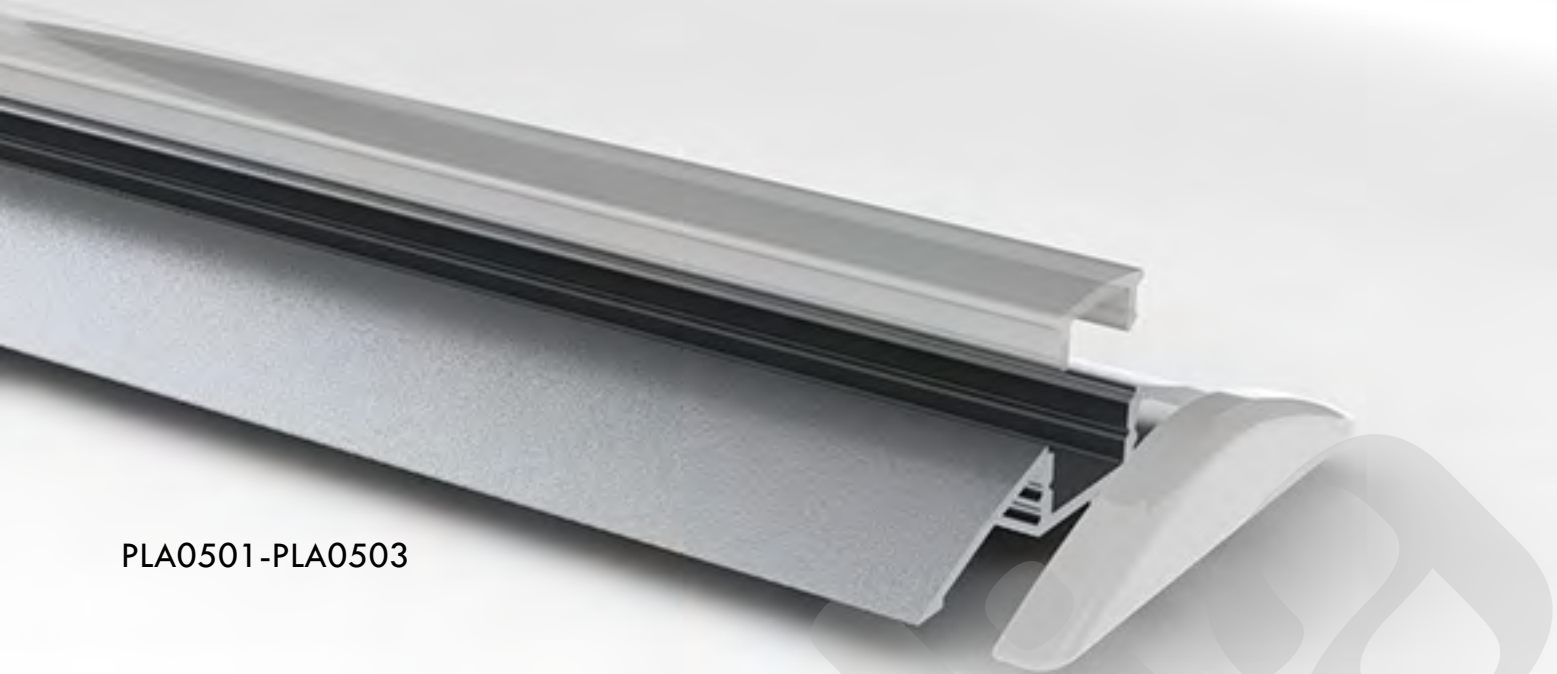
Applications:

- Under kitchen cabinets LED lighting
- Stores shelves LED lighting
- Floor LED lighting
- Storage shelves LED lighting
- Exhibition boot LED lighting
- Interior LED lighting



LPS509-LPS510
with holding ears





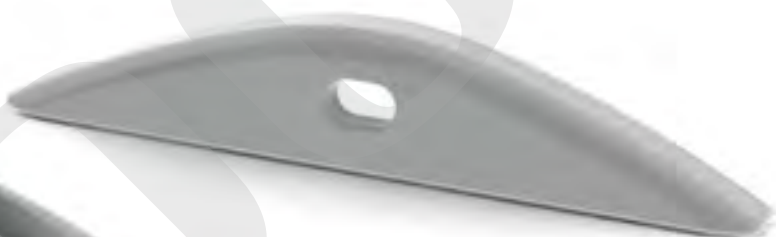
PLA0501-PLA0503

ALU-FLAT ACCESSORIES

PLS0507-PLS0508
with holding ears



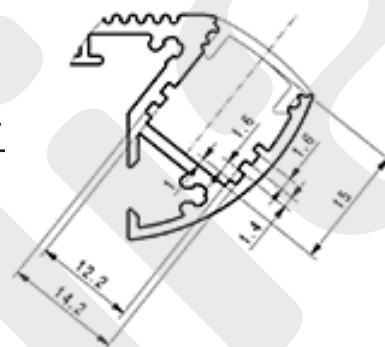
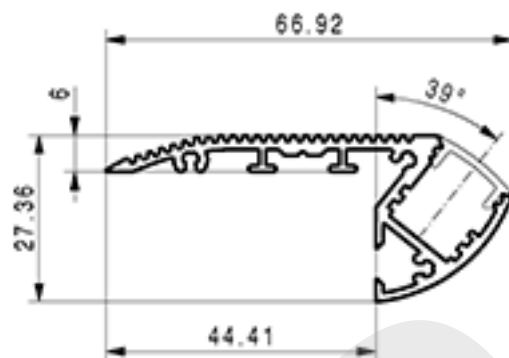
PLS0507



PLS0508



ALU-STAIR



hard aluminium alloy, ware out resistant

free space for silicone insulation of the chamber (option)

dots fee led profile (frosted)
12,2mm wide led chamber

PLA1101-PLA1102

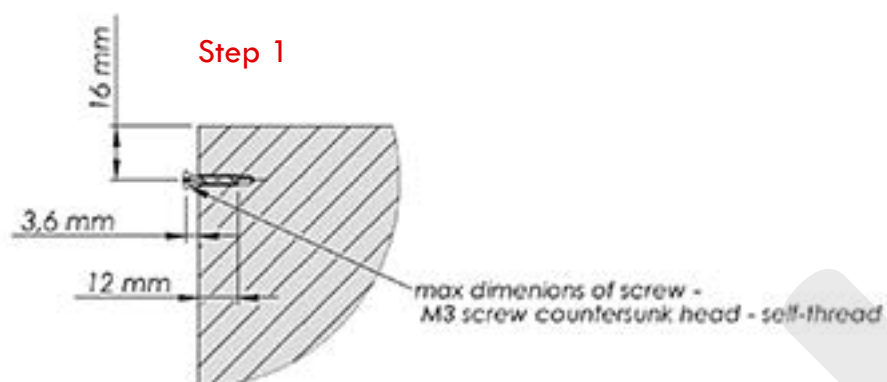
LPS1107
end cap (right)

LPS1108

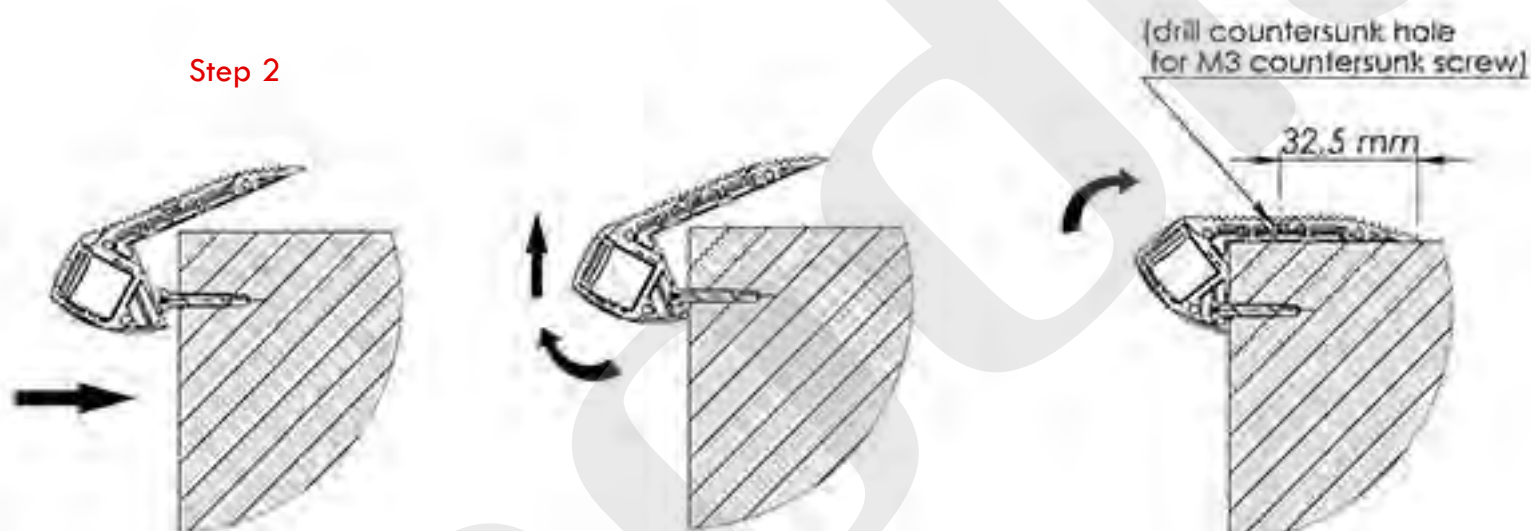
ALU-STAIR

Stair installation guide

Step 1

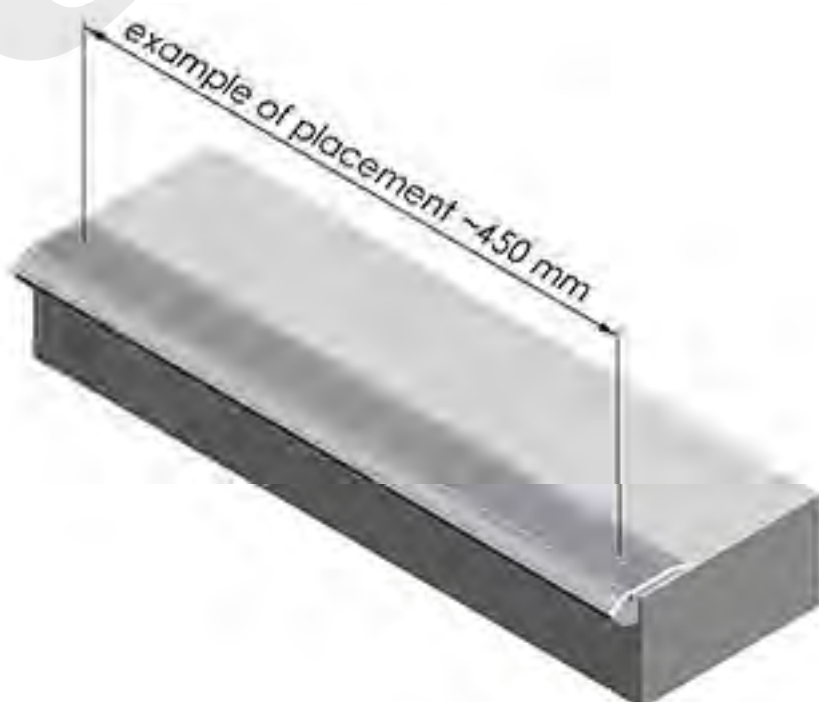
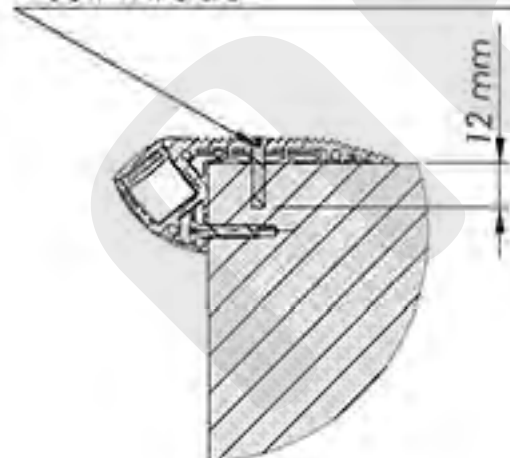


Step 2



Step 3

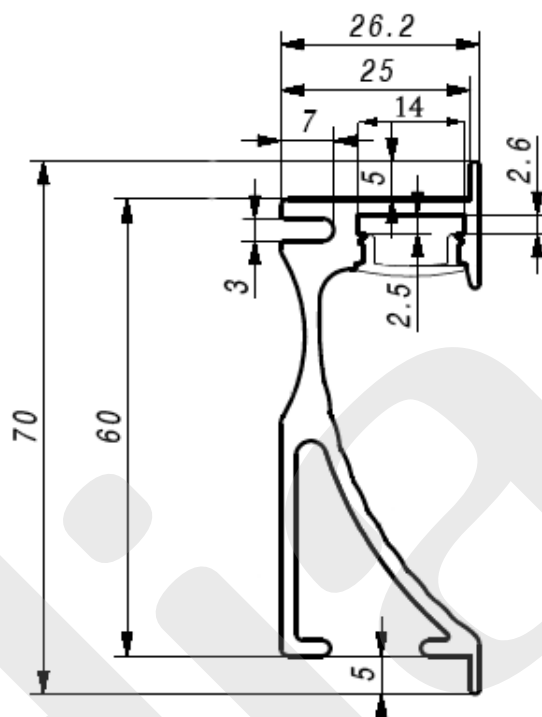
Countersunk head screw M3x16
- self thread



ALU-WALL

Stair installation guide

wall installed led profile
only lengths of 2 meter
available in silver and drak brown



LPA1001 Alu anodized 2m
LPA1002 Alu Dark Brown 2m



ALU-WALL

2m units only, available in white or dark-brown

WALL-INSTALLED LED FIXTURE



Wall Alu
Wall Brown

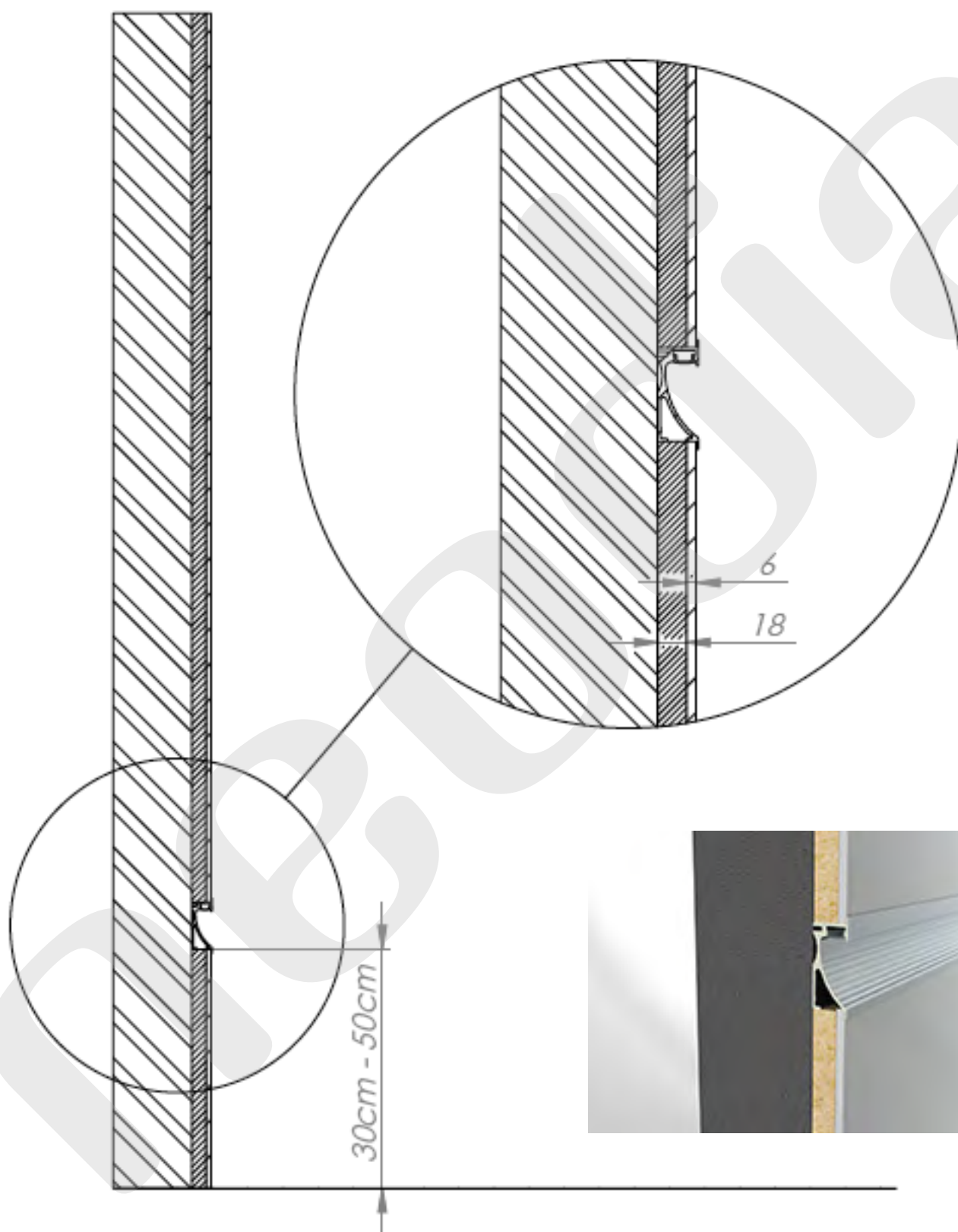
LPS1009 left end cap

LPS1008 right end cap

ALU-WALL

2m units only, available in white or dark-brown

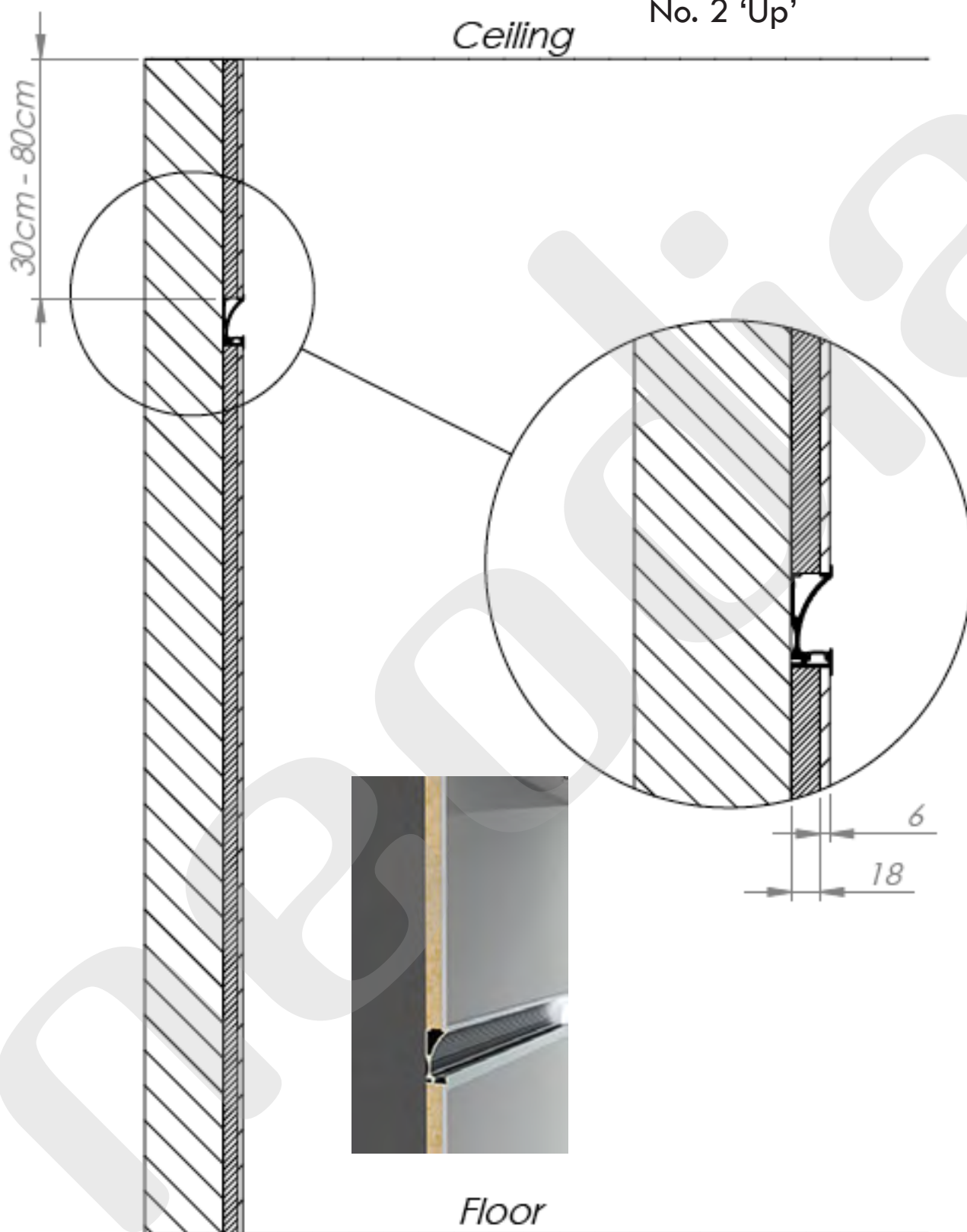
INSTALLATION OPTION No. 1 'Down'



ALU-WALL

2m units only, available in white or dark-brown

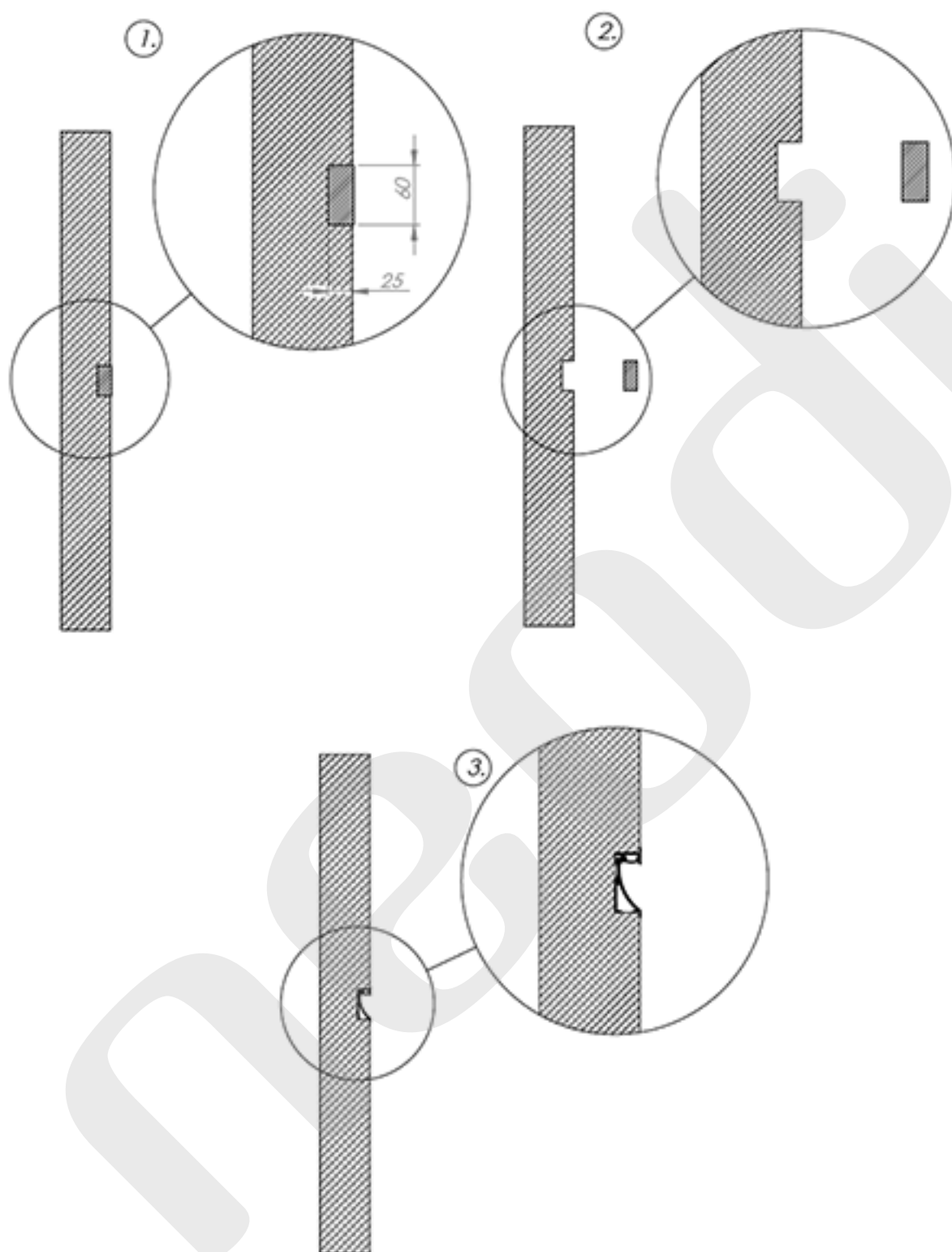
INSTALLATION OPTION No. 2 'Up'



ALU-WALL

2m units only, available in alu silver or dark-brown

INSTALLATION OPTION No. 3 'Down' Cupboard

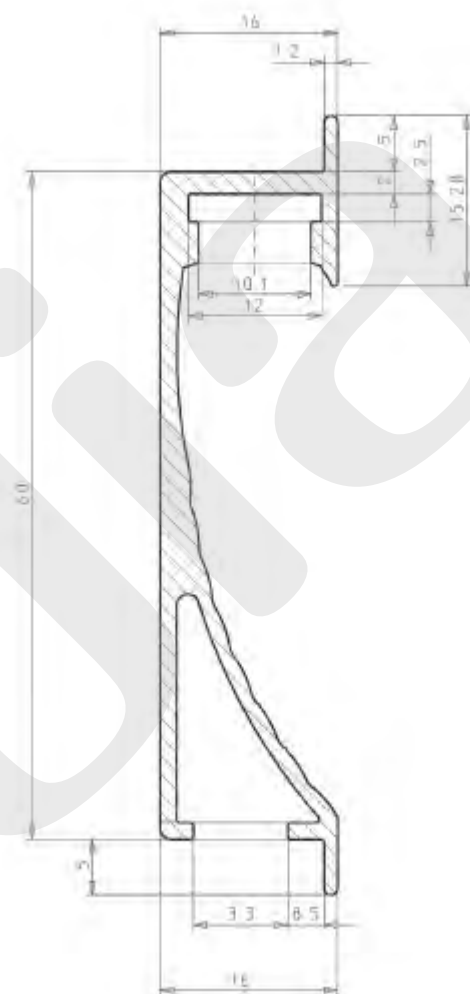
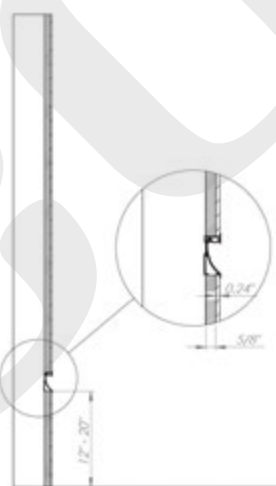
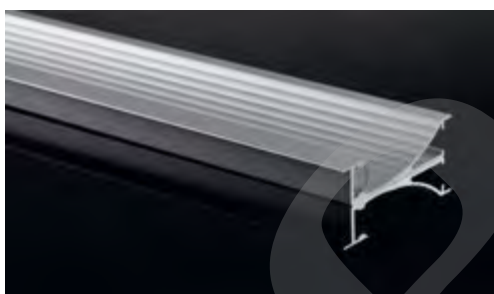


ALU-WALL US

2m units only, available in white or dark-brown

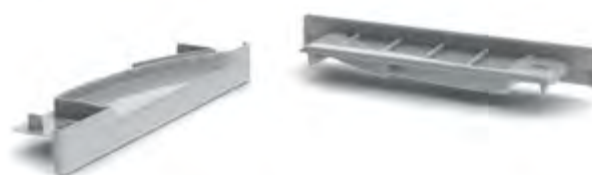


LPA1011 Alu Wall US 2 meter



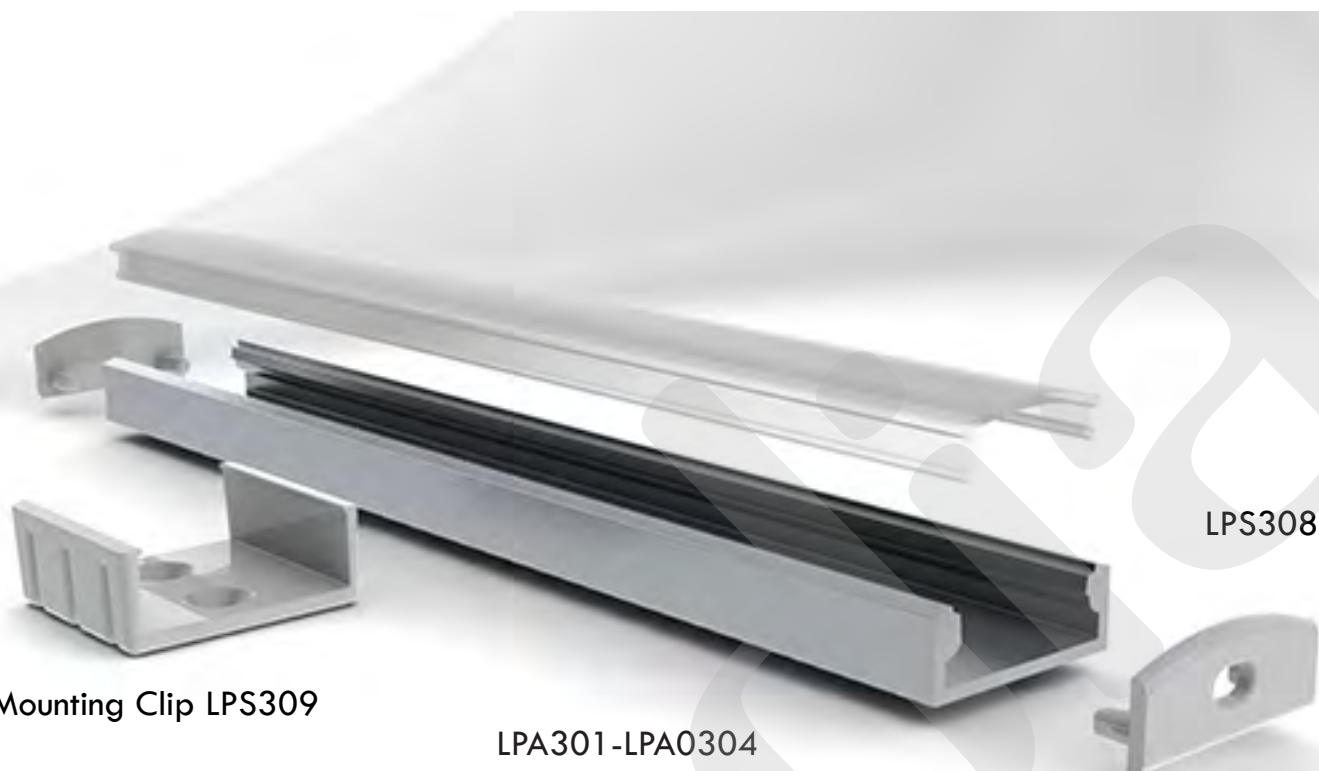
Height 60mm
Width 16mm
Length 200 cm

Max width strip 10mm



LPS1012 End cap Right
LPS1013 End cap Left

SLIM LINE WIDE 8mm



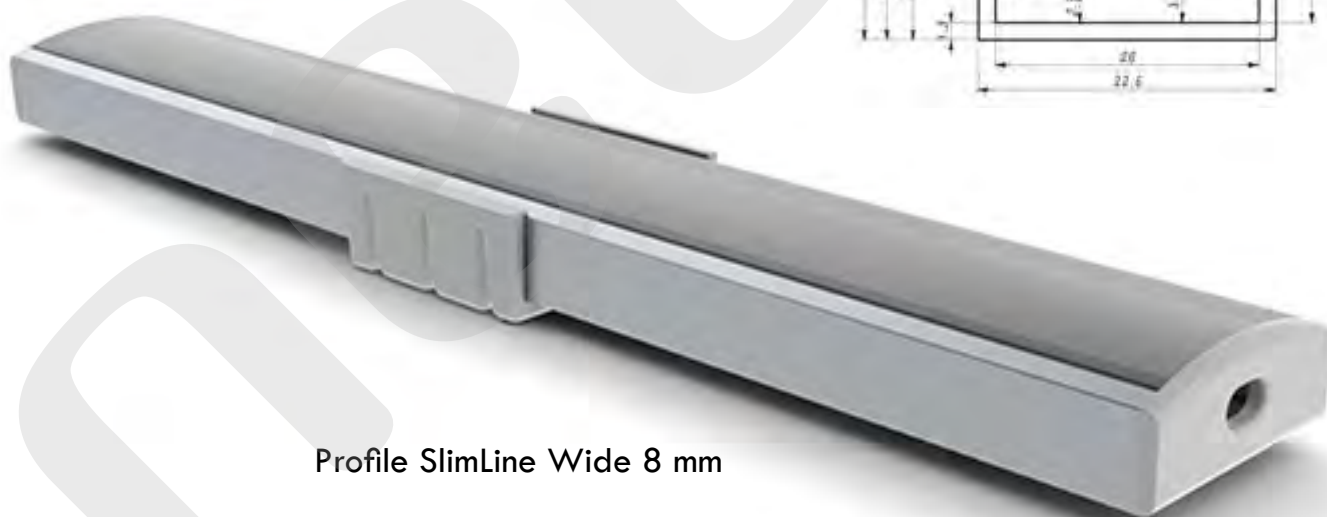
Mounting Clip LPS309

LPA301-LPA0304

LPS308

LP307 End cap without cable hole
LP308 End cap with cable hole

End Cap Slimline Wide 8mm

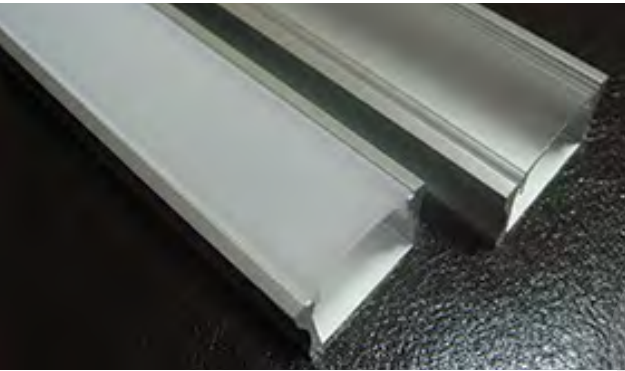


Profile SlimLine Wide 8 mm

- LP0301 SlimLine Wide 8mm 1m clear cover
- LP0302 SlimLine Wide 8mm 1m frosted cover
- LP0303 SlimLine Wide 8mm 2m clear cover
- LP0304 SlimLine Wide 8mm 2m frosted cover

SLIM LINE WIDE 15mm

LPA0311-LPA0314



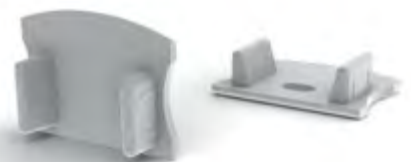
Product features :

- Suitable for the double row LED stripes up to 18mm
- 18mm wide LED channel
- LEDs dots free led profile (frosted)
- Heavy heat sink for the LEDs
- Suitable for IP67 LED strips and any other led strips



Mounting clip
LP0319

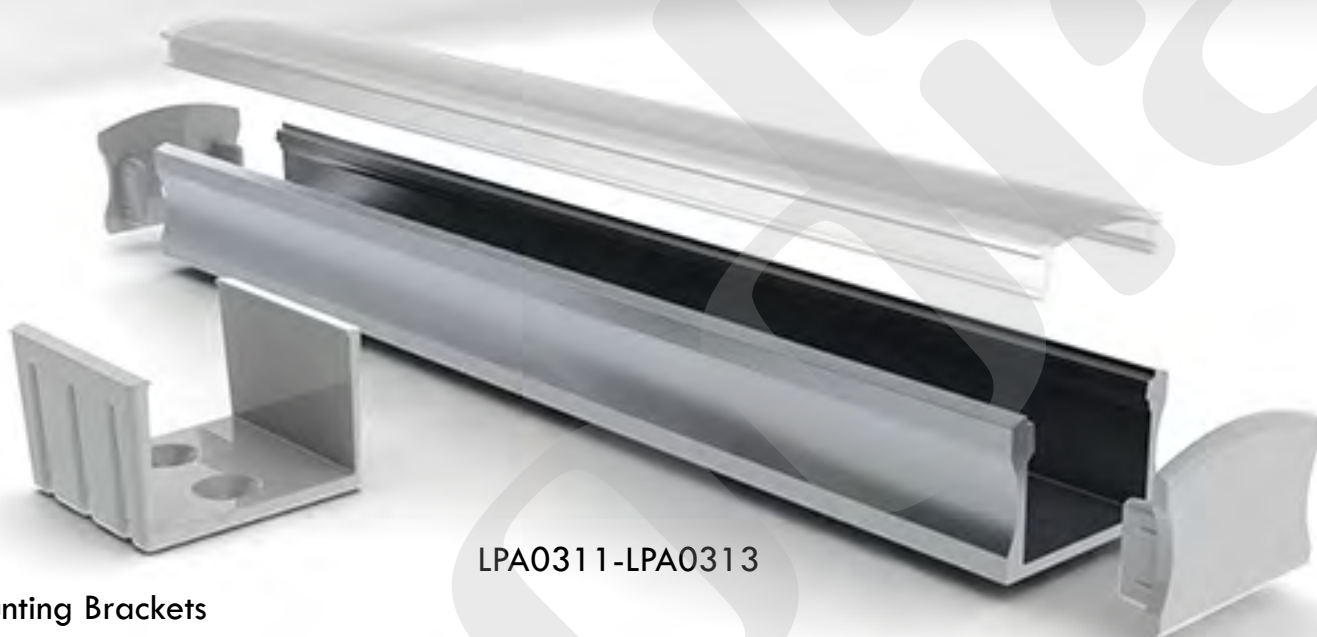
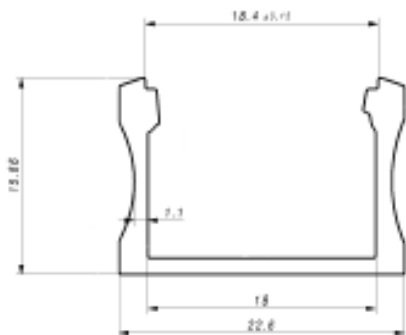
End caps



LP0317 without cable hole
LP0318 with cable hole



SLIM LINE WIDE 15mm



Mounting Brackets
LPS0319

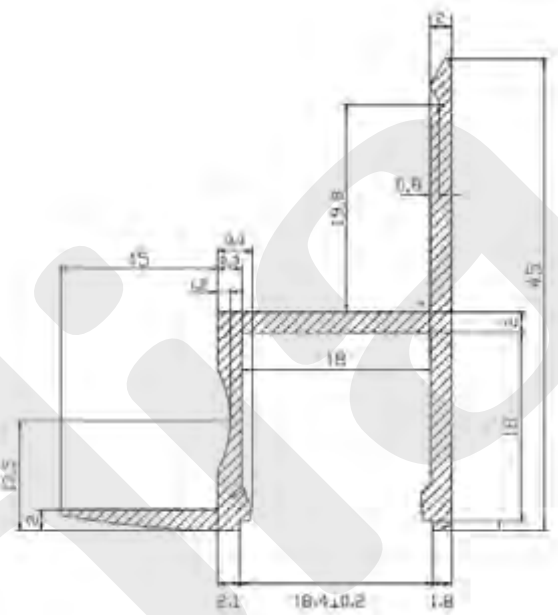
LPA0311-LPA0313

End cap
LPS0317

Slim Line Wide 15mm
with all accessories



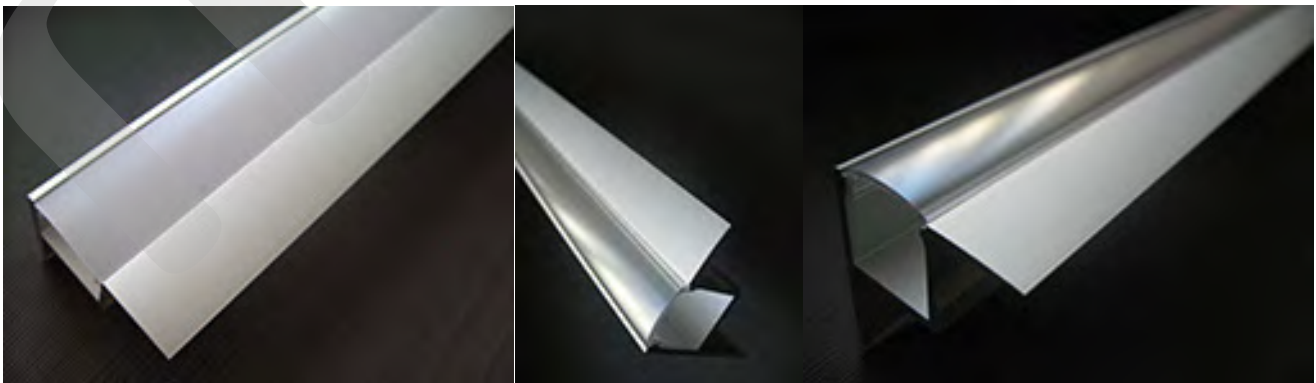
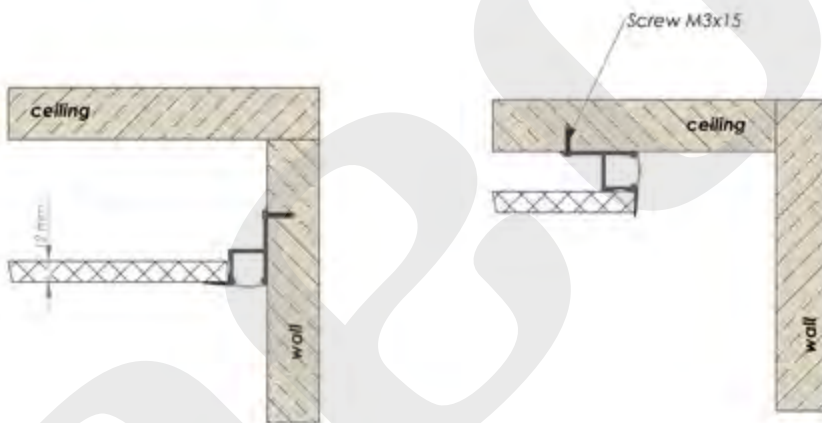
ALU Ceiling



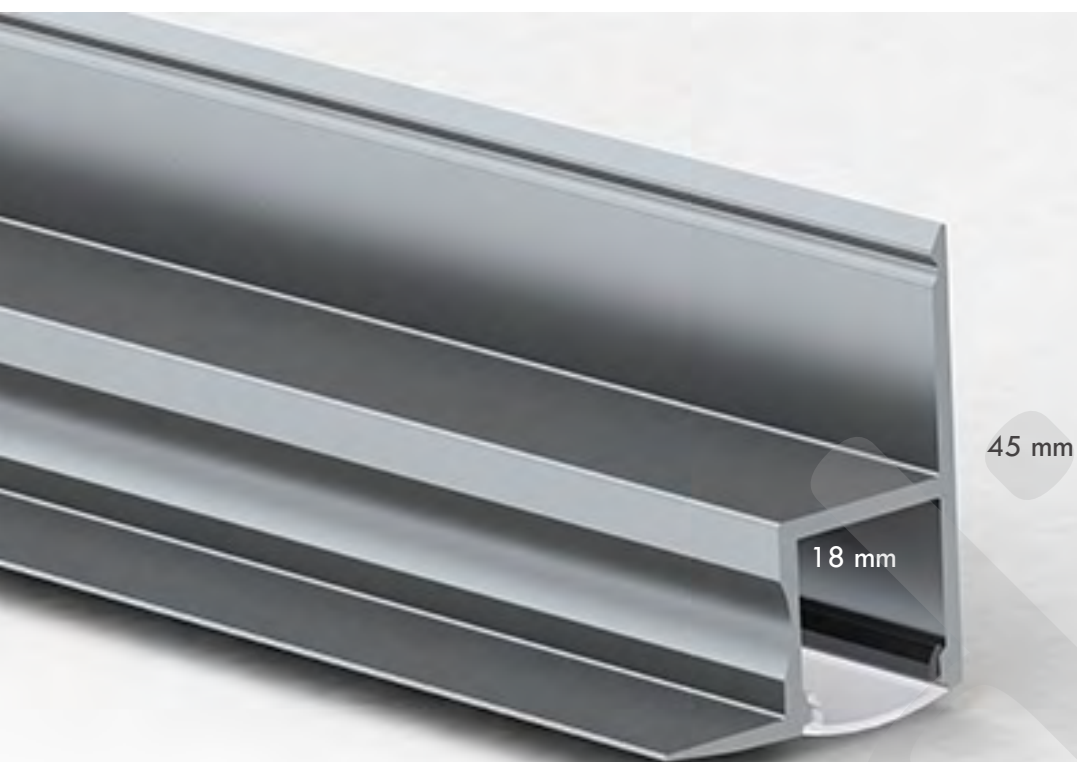
FIXING ALU-CEILING

LP1401-LP01404

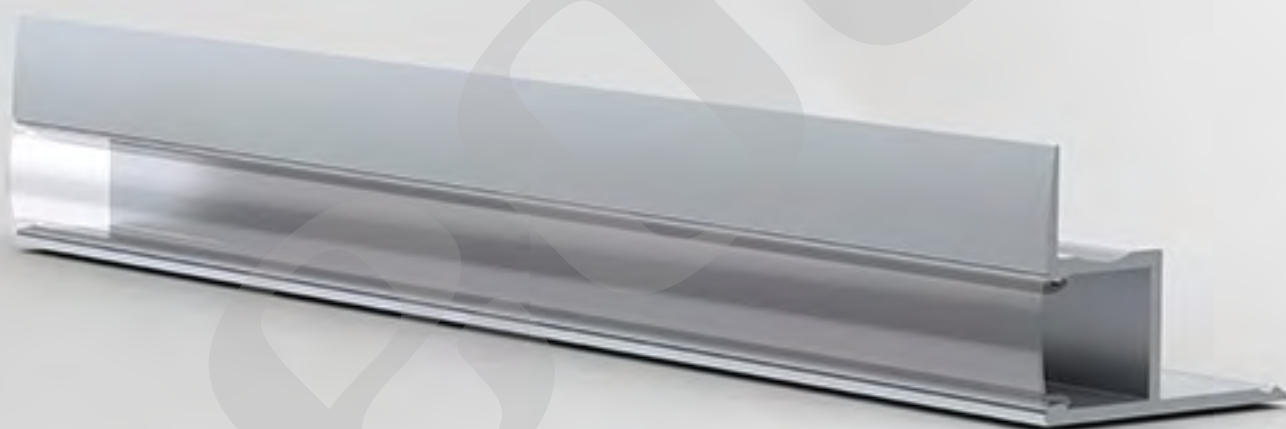
Available lengths:
1 meter & 2 meter



ALU Ceiling



LPA1401-LPA1404



PRODUCT FEATURES

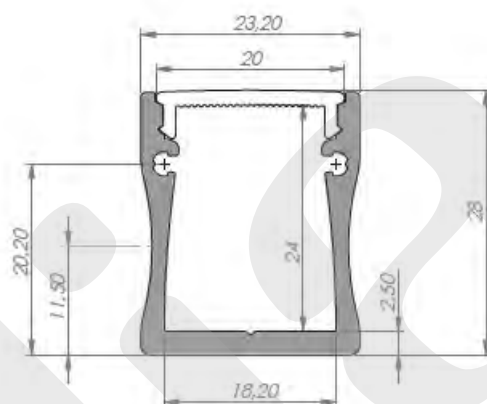
- LEDs dots free led prole
- Suitable for normal, IP67 or the double row LED stripes
- 18mm wide LED channel
- Heavy heat sink for the LEDs
- For indor/outdoor (with IP67 leds) use
- PC, UVA rezitant diuser (clear/frosted)



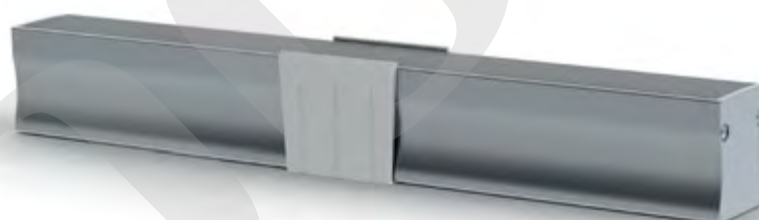


SLIMLINE WIDE 20 mm NEW

LPA2801-LPA2804



Mounting clips
LPS2809

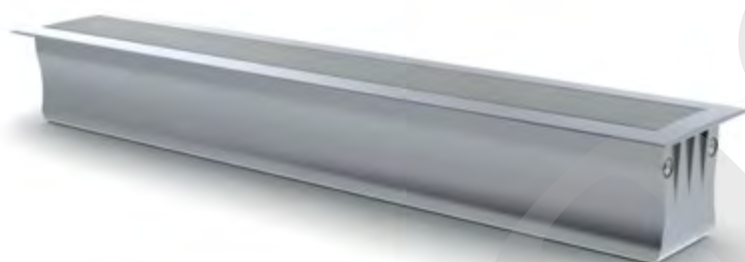
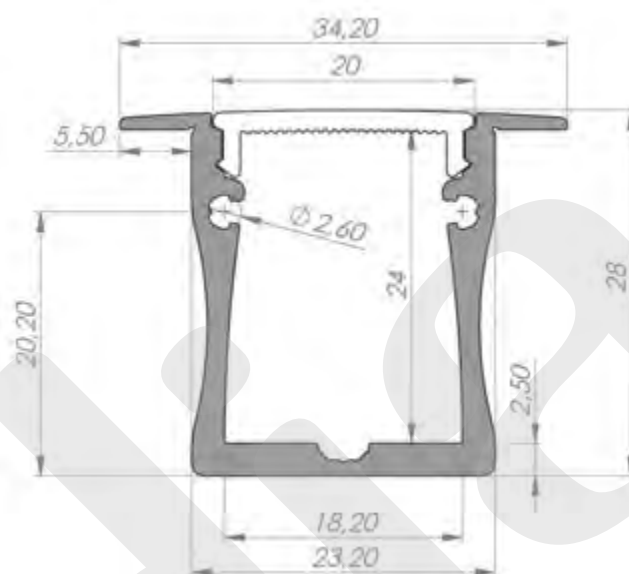


LPS02805 end cap alu



SLIMLINE WIDE 20 mm OPBOUW NEW

LPA2821-LPA2824



Complete set SlimLine Wide
20mm



LPS02825 end cap alu



For powerful LED Strips up to 18 mm wide

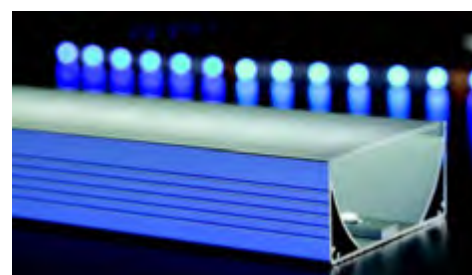
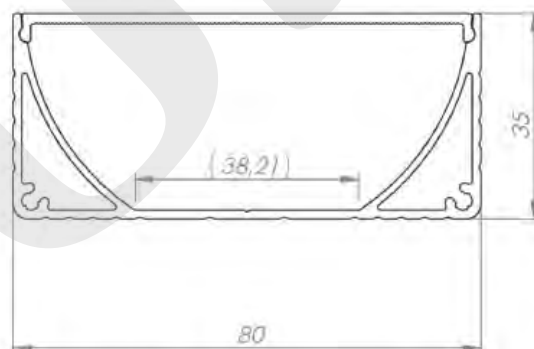
POWERLINE WIDE 80 mm

LP80K1 1meter clear cover
LP80K2 2meter clear cover

LP80M1 1meter frosted cover
LP80M2 2meter frosted cover

This is new surface installation 80mm width high quality anodized aluminum LED profile with “LEDs DOTS FREE” frosted diffuser.

The anodizing surface quality is the same as in other our profiles and it is free of any extrusion marks and production screeches. Anodizing surface is thick enough to resist the transportation and sometimes difficult operating condition. Extended internal LED chamber dimensions for LED stripes gives you free hands of type and size of LED stripe/s what can be accommodate inside the profile. You can use almost any type of led stripe and you decide how much light will come out by using the right LED stripe. The heavy duty heat sink (PLW80 profile) is prepared and capable to provide excellent cooling system for low/high power LED bars [up to 35W/m]. Specially shaped internal chamber reduce the light lost (bouncing of the light inside the profile) and drive the light slightly up to the diffuser surface where the light diffusion is taking place. The profile is coming with choice of two high quality UV stabilized, snap in diffusers in frosted and transparent. PLW80 profile is available with color matching aluminum end caps for professional finish.



LP8009 Enc cap alu



POWERLINE WIDE 80 mm



Extra Wide Alu Profile
For Power LED Strips
Professional applications
High Quality anodized aluminium

LP80K1 1meter clear cover
LP80K2 2meter clear cover

LP80M1 1meter frosted cover
LP80M2 2meter frosted cover

